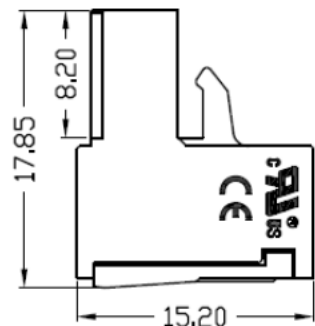
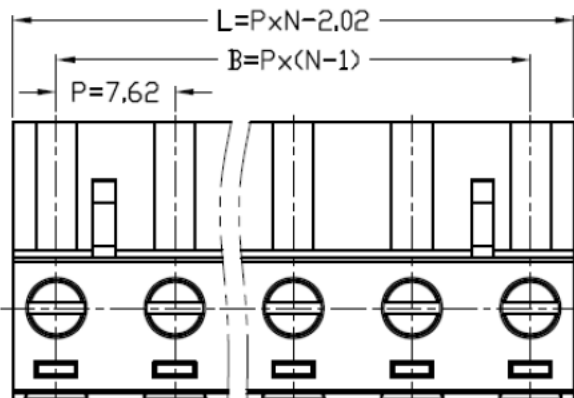
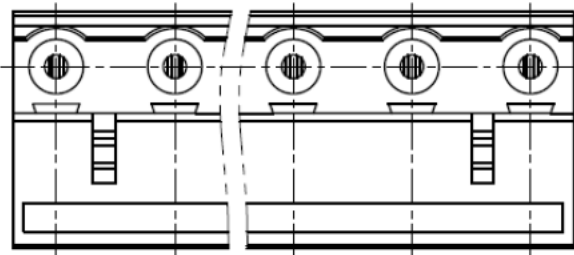
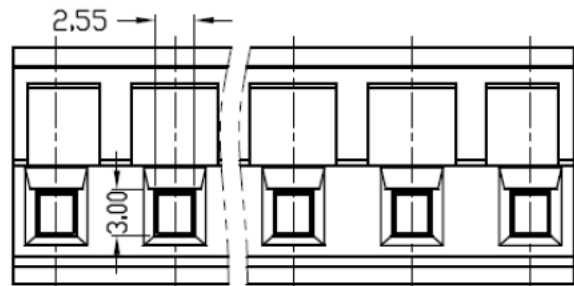


02P




2.80



N	02P	03P	04P	05P	06P	07P	08P	09P	10P	11P	12P	13P
L	13.22	20.84	28.46	36.08	43.70	51.32	58.94	66.56	74.18	81.80	89.42	97.04
B	7.62	15.24	22.86	30.48	38.10	45.72	53.34	60.96	68.58	76.20	83.82	91.44
N	14P	15P	16P	17P	18P	19P	20P	21P	22P	23P	24P	
L	104.66	112.28	119.90	127.52	135.14	142.76	150.38	158.00	165.62	173.24	180.86	
B	99.06	106.68	114.30	121.92	129.54	137.16	144.78	152.40	160.02	167.64	175.26	

UL	IEC
300V/16A	400V/20A
28~12AWG	0.2~2.5mm ²
AC 2500V	
6000V	
DC500V 500MΩ above	
≤8mΩ	
7mm	
-40°C~+105°C	

Housing: PAL66 (UL94 V-0)
 Contact: Copper alloy, Ni plated
 Screws: Steel, Zn plated
 Cage: Copper alloy, Ni plated

TOLERANCE		
SCALE	UNIT mm	
DRAW Walter	DATE 5.4.2014	TITLE SM C09 0764 XX YOC
CHECK Vanda	REV	DESCRIPTION Pluggable Terminal Block RM7,62mm
