

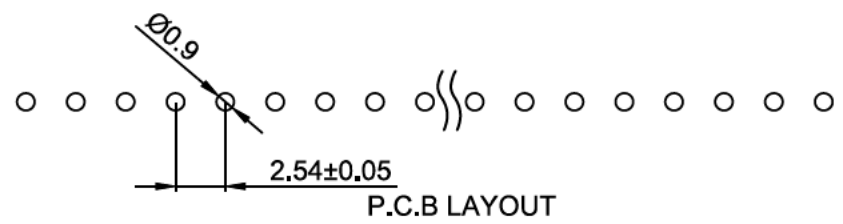
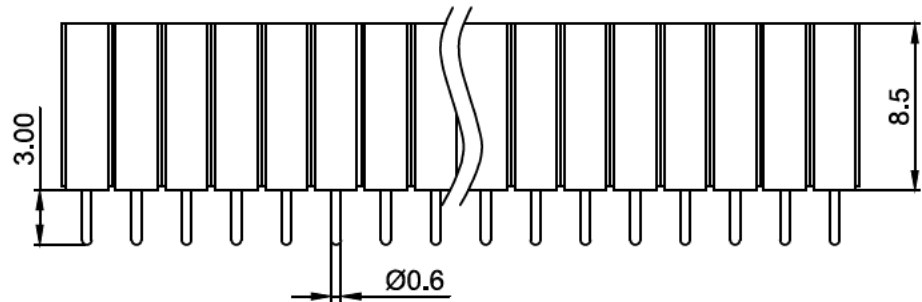
Technical Data

Material:
 Pin(outer sleeve):Brass,machined CuZn38Pb2
 Clip(contact 6 finger):Beryllium copper,heat treated
 Plating(outer sleeve):
 Tin plated:2µm/80µ" Ni,5µm/200µ" Sn
 Insulator black(housing):PPS

Electrical:
 Current rating:3Amps/contact max.
 Contact resistance:≤4mΩ/contact
 Insulation resistance:≥ 1000MΩ at V=100V
 Operaing voltage:60VAC/DC

Mechanical:
 Average insertion force with steel pin of Ø0.70mm to Ø0.9mm:<250g
 Average withdrawal force with steel pin of Ø0.70mm to Ø0.9mm:>90g min.
 Mechanical life cycle:min.200
 Operaing temperatures:Gold Plated:-55 °C to+105 °C

Soldering temperature:+260 °C,10s max



DIMENSIONS ARE IN MILLIMETERS TOLERANCE				SCHMID-M	
· ×	±0.5	ANGLE ±3°	SCALE		TITLE Socket Machined Pin Single Row, H=8,5mm
· × ×	±0.1		REV		
· × × ×	±0.05				DRAWING NO SM C07 0109 XX H=8,5
DRAWN Walter		DATE 06.08.18		FILE NO	
APPROVAL Vanda		DATE			