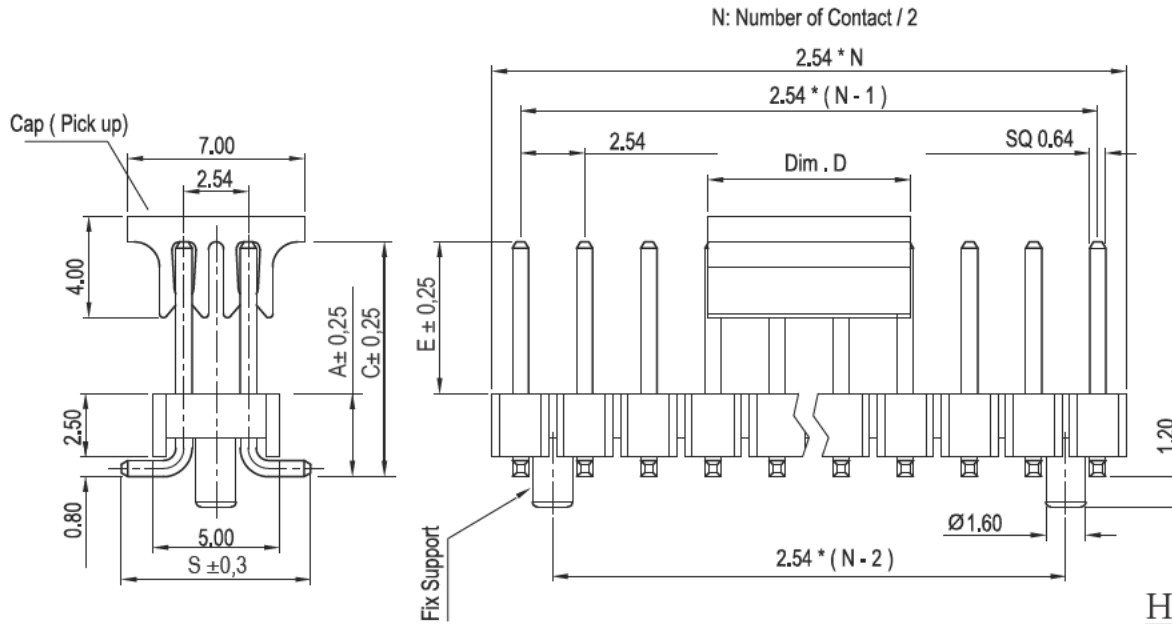


# ROHS COMPLIANT



## Notes:

### 1. Electrical Characteristics:

- 1. 1 Contact Resistance: 20mΩ Max
- 1. 2 Dielectric Withstanding Voltage: 600V AC(rms) for 1 Minute
- 1. 3 Insulation Resistance: 1000mΩ Min
- 1. 4 Current Rating: 3A
- 1. 5 Voltage Rating: 250V AC rms

### 2. Environment Characteristics:

- 2. 1 Temperature: -65°C ~ +125°C
- 2. 2 Soler Temperature +260°C 3-5S Max

### 3. Materials:

- 3. 1 Contact Materials: Copper Alloy
- 3. 2 Contact Plating: Gold plate
- 3. 3 Insulator Materials: PA46 / Black, UL94V-0  
on request: PA6T / PA9T

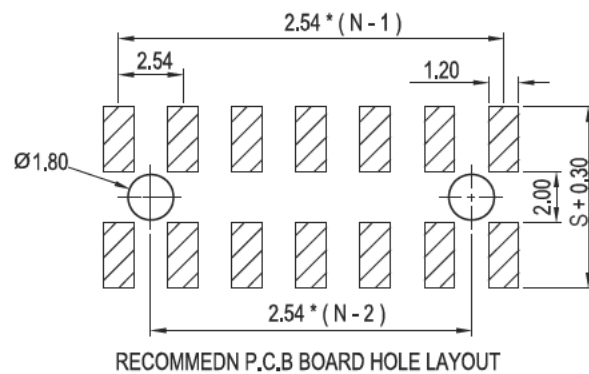
## How to order:

### SM C02 2200 XX BD (E=YY S=ZZ)-packing-FIX



Dimensions not mentioned: A= 3,3mm / E=6,0mm / S= 7,5mm

Packing: not mentioned = Bag / - T = Tube / - CAP-REEL = with Tape&Reel&Cap

FIX : not mentioned = without Fix Support



Poles(N)	Dim . D
2 - 8 P	5.0mm
9 - 40 P	8.0mm

TOLERANCE		
SCALE	UNIT mm	
DRAW Valter	DATE 08.07.2024	TITLE SM C02 2200 XX BD (E=YY S=ZZ) -packing
CHECK Forester	REV 2	
		Description 2,54mm Pin Header Dual Rows SMT