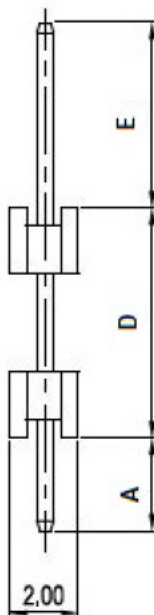


N: No. of contact of 1 row



Notes:

1. Electrical Characteristics:

- 1. 1 Contact Resistance: 20mΩ Max
- 1. 2 Dielectric Withstanding Voltage: 500V AC(rms) for 1 Minute
- 1. 3 Insulation Resistance: 1000mΩ Min
- 1. 4 Current Rating: 1.5A
- 1. 5 Voltage Rating: 250V AC rms

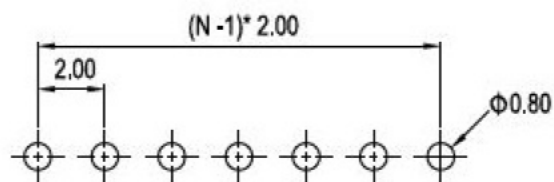
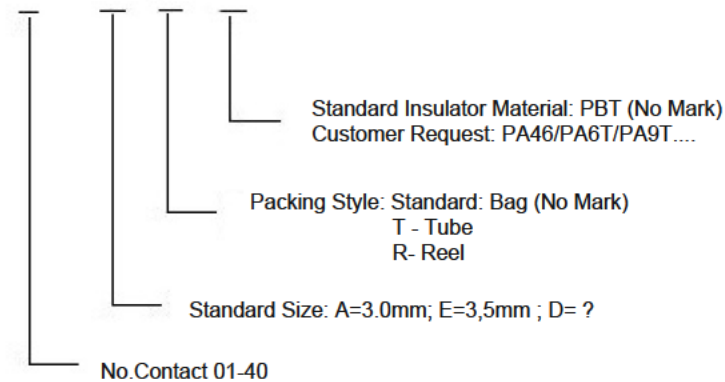
2. Environment Characteristics:

- 2. 1 Temperature: -40°C ~ +105°C

3. Materials:

- 3. 1 Contact Materials: Copper Alloy
- 3. 2 Contact Plating: Tin or Gold plate
- 3. 3 Insulator Materials: PBT, Black, UL94V-0 or High temperature Materials like PA46/PA6T/PA9T

SM C02 6100 XX ES (XX) (XX) (XX)



Recommend PCB Layout

TOLERANCE		SCHMID-M
SCALE	UNIT mm	
DRAW Walter	DATE 01.08.2022	TITLE
CHECK Breez	REV	SM C02 6100 XX ES
		DESCRIPTION
		2,00mm Pin Header, Single Row, Straight, THT, Double Plastic