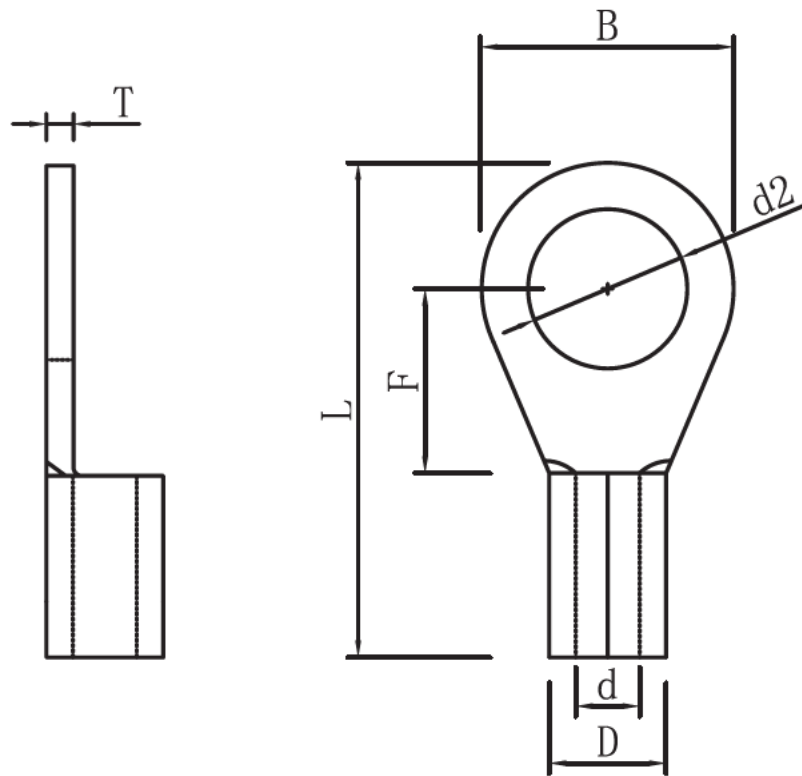


REV.	ECN.NO.	APPD.
A	/	LXQ



TOLERANCE UNLESS OTHERWISE SPECIFIED		Circular bare terminal Series - Copper Tinned				
.XX ±0.20		Dimension (mm): d2:5,3 / B:8,0 / L:15,8 / F:7,0 / H:4,8 / D:3,4 / d:1,7				
.X ±0.30	.XX' ±2'	Cross Section of Leads: 0,5-1,5mm ² / 22-16AWG Imax:19A				
APPROVED		PART NAME:	SM TE01 81525			
CHECKED						C
DRAWN		PROJECTION:	UNIT:	SCALE	SHEET	REV.
DATE	2014.08.12		mm	1:1	10F1	A