

## Series SM SE 8000 EMC/EMI Filter



SE 8000

SE 8000S

SE 8000S1

Rated voltage	120/250VDC
Rated current	1A-10A
Operating frequency	50/60Hz
Temperature Range	HPF25/085/21
Test voltage (1min)	Line to Line 1450VDC
Test voltage (1min)	Line to Ground 2000VAC

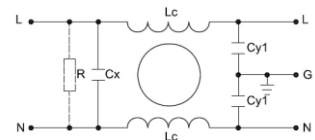
Filter	Rated Current(A)	Rated Voltage(V)	Leakege Current(mA)
SE8000-1-01	1	120/250	0,5
SE8000-3-01	3	120/250	0,5
SE8000-6-01	6	120/250	0,5
SE8000-10-01	10	120/250	0,5
SE8000S-1-01	1	120/250	0,5
SE8000S-3-01	3	120/250	0,5
SE8000S-6-01	6	120/250	0,5
SE8000S-10-01	10	120/250	0,5
SE8000S1-1-01	1	120/250	0,5
SE8000S1-3-01	3	120/250	0,5
SE8000S1-6-01	6	120/250	0,5
SE8000S1-10-01	10	120/250	0,5

Application:

Single-phase power supplies,switch-mode power supplies,

Small to medium-sized machines and household equipment,

Prottable electrical and electronic equipment,



## Series SM 8100/8200 EMC/EMI Filter With Fuse Holder



SE 8100  
Single Fuse Holder

SE 8200  
Double Fuse Holder

Rated voltage	120/250VDC
Rated current	1A-10A
Operating frequency	50/60Hz
Temperature Range	HPF25/085/21
Test voltage (1min)	Line to Line 1450VDC
Test voltage (1min)	Line to Ground 2000VAC

Application:

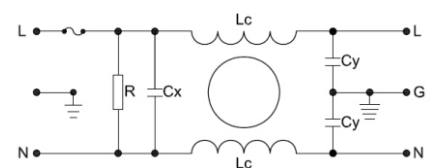
Single-phase power supplies,switch-mode power supplies,

Small to medium-sized machines and household equipment,

Prottable electrical and electronic equipment,

Test and measurement equipment

Medical equipment etc



Filter	Rated Current(A)	Rated Voltage(V)	Leakege Current(mA)
SE8100-1-01	1	120/250	0,5
SE8100-3-01	3	120/250	0,5
SE8100-6-01	6	120/250	0,5
SE8100-10-01	10	120/250	0,5
SE8200-1-01	1	120/250	0,5
SE8200-3-01	3	120/250	0,5
SE8200-6-01	6	120/250	0,5
SE8200-10-01	10	120/250	0,5

## Series SM SE 8300/8400 EMC/EMI Filter With Fuse Holder and Switch



SE 8300  
Single fuse Holder



SE 8400  
Double fuse holder

Rated voltage	120/250VDC
Rated current	1A-10A
Operating frequency	50/60Hz
Temperature Range	HPF25/085/21
Test voltage (1min)	Line to Line 1450VDC
Test voltage (1min)	Line to Ground 2000VAC

Filter	Rated Current(A)	Rated Voltage(V)	Leakege Current(mA)
SE8300-1-01	1	120/250	0,5
SE8300-3-01	3	120/250	0,5
SE8300-6-01	6	120/250	0,5
SE8300-10-01	10	120/250	0,5
SE8400-1-01	1	120/250	0,5
SE8400-3-01	3	120/250	0,5
SE8400-6-01	6	120/250	0,5
SE8400-10-01	10	120/250	0,5

Application:

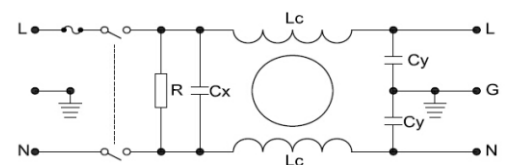
Single-phase power supplies,switch-mode power supplies,

Small to medium-sized machines and household equipment,

Protoble electrical and electronic equipment,

Test and measurement equipment

Medical equipment etc



## Series SM SE8600 EMC/EMI Filter With Mains Switch

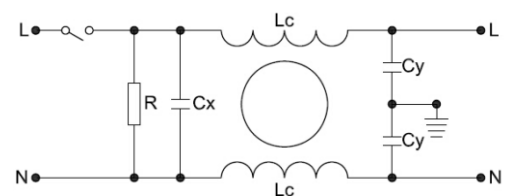


Application:

Single-phase power supplies,switch-mode power supplies,  
Small to medium-sized machines and household equipment,  
Protoble electrical and electronic equipment,  
Test and measurement equipment  
Medical equipment etc

Rated voltage	120/250VDC
Rated current	1A-10A
Operating frequency	50/60Hz
Temperature Range	HPF25/085/21
Test voltage (1min)	Line to Line 1450VDC
Test voltage (1min)	Line to Ground 2000VAC

Filter	Rated Current(A)	Rated Voltage(V)	Leakege Current(mA)
SE8600-1-01	1	120/250	0,5
SE8600-3-01	3	120/250	0,5
SE8600-6-01	6	120/250	0,5
SE8600-10-01	10	120/250	0,5



## Series SM SE1000 and SM SE2000

SE1000-X-02  
Metal Printed EMI filter  
X: 1A; 3A; 6A



SE1001-X-02  
Black Platic PCB Filter  
X: 1A; 3A; 6A



SE1002-X-02  
Low Cost PCB Filter  
X: 1A; 3A; 6A



SE2000-X-01  
Single Phase Single EMI Filter  
X: 1A; 3A; 6A; 10A

