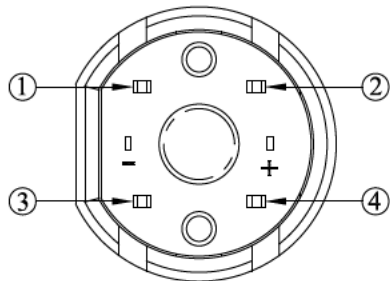
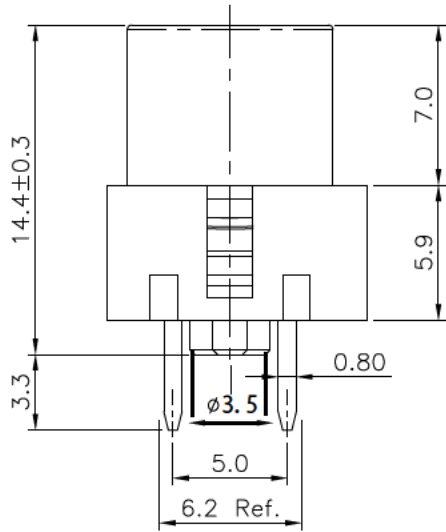
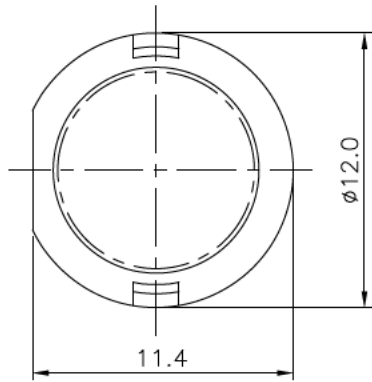


ROHS

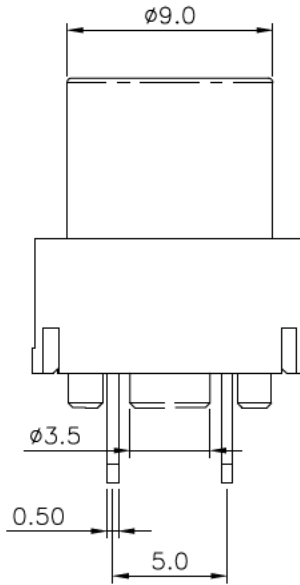


Electrical Characteristics:

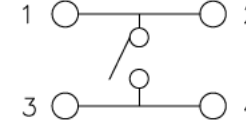
Rating : 10mA 35VDC
 Contact Resistance : 50mΩ max. (Initial)
 Insulation Resistance : 100MΩ min. (at 250 VDC)
 Dielectric Strength : AC 250V (50/60Hz for 1 minute).
 LED operating current : 20mA max.

Mechanical Characteristics:

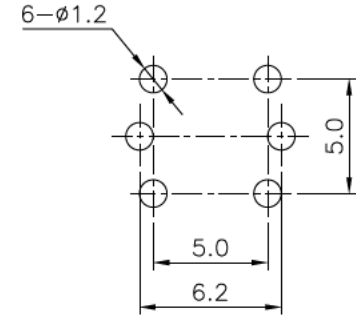
Operating Force :200±80gf
 Operating Life : 50,000 cycles min.
 Travel : 1.0 ± 0.4mm
 Operating temperature : -20°C to 70°C.



REV	DESCRIPTION	DRW	DATE
A/0	FIRST ISSUE		2020-06-19



ELECTRICAL DIAGRAM



P.C.B LAYOUT

COLOR (X)					
R	Y	G	L	W	B
Red	Yellow	Green	Blue	White	Black

NO.	PART NAME	MATERIAL	QTY.	FINISHING
1	BUTTON	PC	1	
2	BASE	PA66	1	
3	TERMINAL	C2680	4	Ag PLATED
4	MAST	PA66	1	
5	CONTACT	C5210	1	Ag PLATED
6	SPRING	SUS304	1	
7	PLAY SLICE	SUS301	1	
8				

TOLERANCE				DRAWN	DATE	TITLE	TACT SWITCH
UNLESS OTHERWISE STATED					2020. 06. 09		
X.X	±0.25	∠	±1°	CHK'D	DATE	MODEL	SM PB TS4-3XN
X.XX	±0.15	UNIT	mm		2020. 06. 19	MATL	
REV.	B/02	SCALE	3:1	APPV'D	DATE	FINISH	
SIZE	A4	SHEET	1 OF 1		2020. 06. 19		

