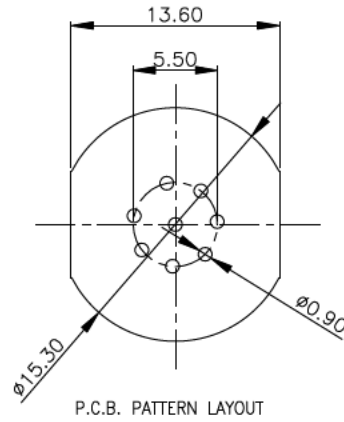
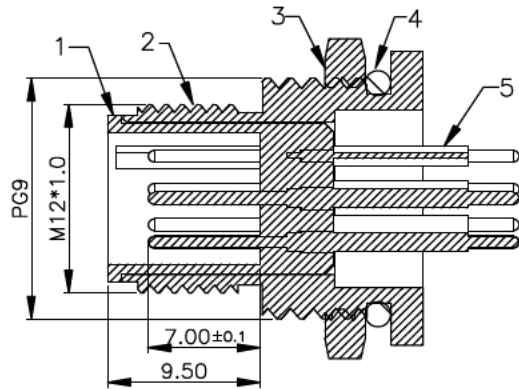


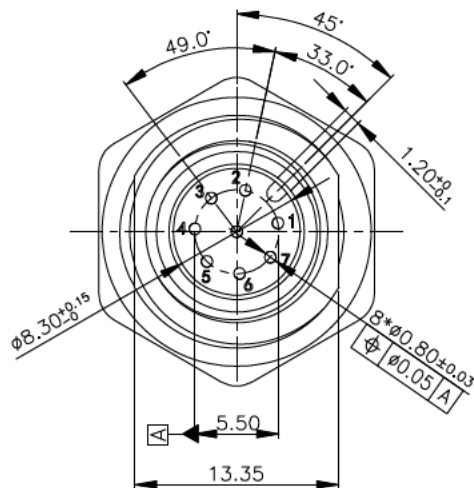
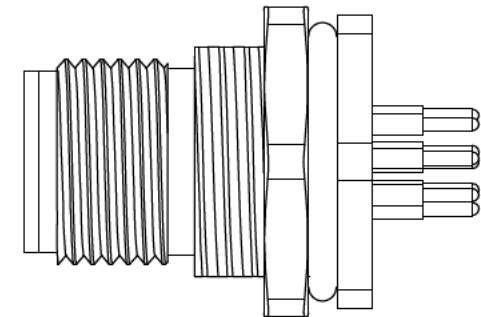
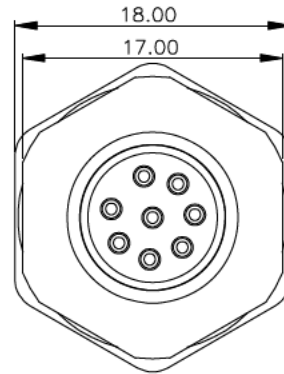
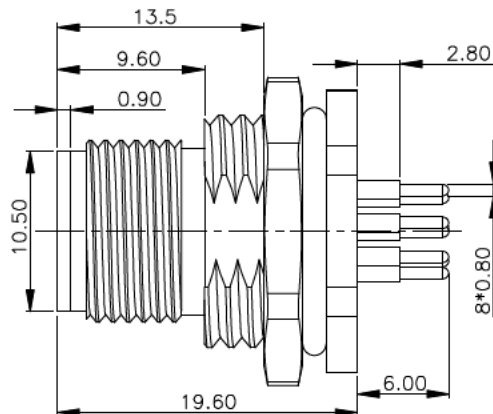
All material is RoHS

6		7			
REV	LTR	ECN/DESCRIPTION	DATE	APPROVED	
A	-	NEW RELEASE	2019.03.25		



Connector Specification.

- 1. Waterproof rate : IP67
- 2. Operating Temp. : -25°C - +85°C
- 3. Mating Life : >100 times
- 4. Insertion force : 23N Max
withdrawal force : 30N Max
- 5. Rated Voltage : 30V
- 6. Rated Current : 1.5A
- 7. Insulation resistance : $\geq 10^8 \Omega$, 500V DC
- 8. Contact Resistance : $\leq 5m\Omega$



No.	Name	Material
5	CONTACT PIN	H59,PLATED-Au
4	SEALING RING	SIL,BLACK
3	NUT PG9	H59,PLATED-NI
2	OUTER CASING	H59,PLATED-NI
1	INSULATOR	PA,BLACK,UL-94V-0

TOLERANCE	APPROVALS	DATE	PART No.		
X. ±0.20	DRAWN		SM C10 PM12-RPBR08-S0-PG9		
X.X ±0.15	CHECKED		TITLE		
X.XX ±0.10	APPROVED		M12 8pin male, panel rear mount, A code, PG9		
ANGULAR1*	DWG TYPE	PROJECT CODE	UNIT	SIZE	PART No.
UNLESS OTHERWISE SPECIFIED	FIED CUST DWG	PHD	mm	A4	
			SCALE	SHEET	DWG No.
			Free	1 OF 1	REV. A