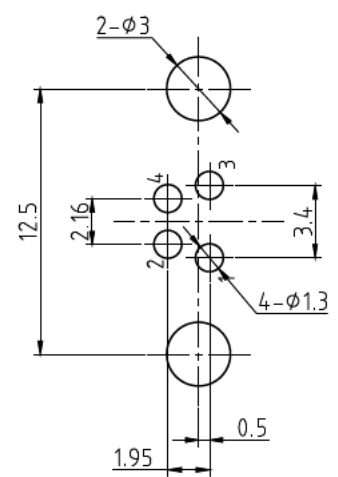
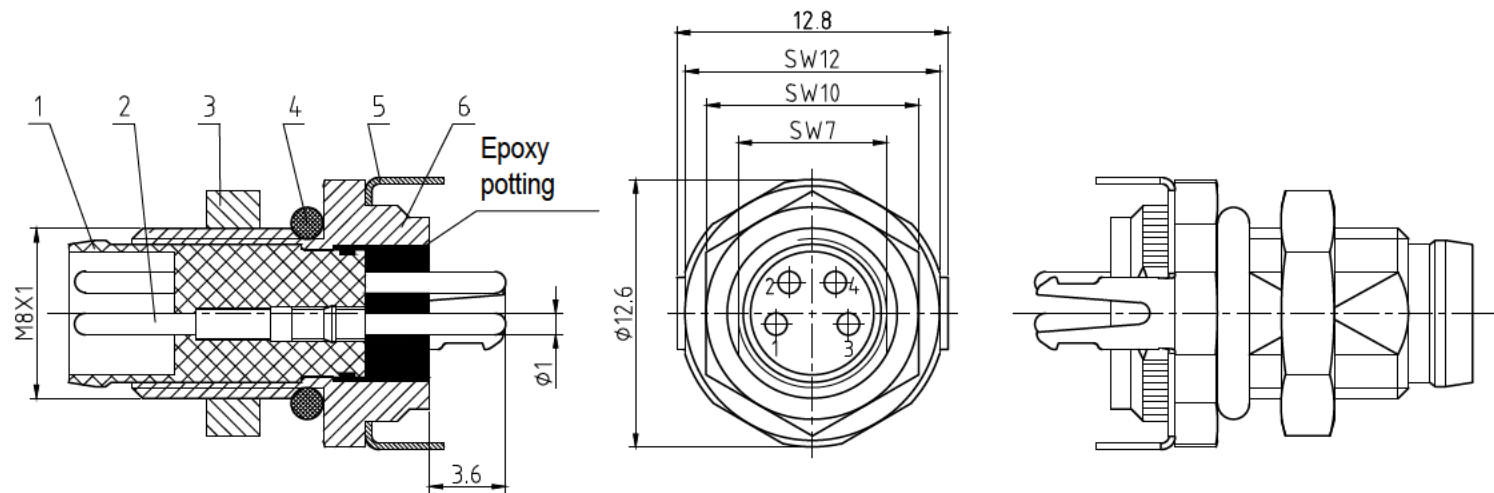
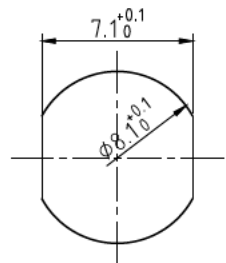


WS



PCB Layout



Mounting panel cut-out

**Characteristics:**

- 1. Operating Temperature: -40°C ~ +85°C;
- 2. Contact Resistance: ≤3mΩ;
- 3. Operating Current: 4A;
- 4. Operating Voltage: 60V d.C;
- 5. Surge Voltage: 800V;
- 6. Env. Protection: IP67;
- 7. Mating Cycles: ≥100次;
- 8. Salt Spray tested: 48h;
- 9. Conformity ROHS Yes;
- 10. Parts are assembled and glued according to drawings

6	WS x.xxx.xxxx	Body	1	
5	WS x.xxx.xxxx	Shielding / Standoff	1	
4	WS x.xxx.xxxx	Sealing φ6×1.5	1	
3	WS x.xxx.xxxx	NUT	1	
2	WS x.xxx.xxxx	PIN	4	
1	WS x.xxx.xxxx	Insulator	1	
POS.	Picture	Name	Qua	Remark

SM C10 PM08-RMBR4-SH0		Unit	mm	
M08 Panel Mount Male 4P Shielded THT IP67 Front Mount		Scale	4:1	
		SUM	(dm)	rev.1
		Weight	(g)	A
Tolerance				
.X ±0.1		Angle ±0.5°		
.XX ±0.05				
.XXX ±0.01				
<b>SCHMID-M</b>				A