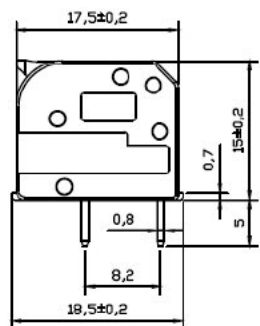
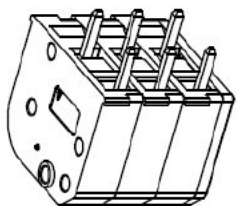
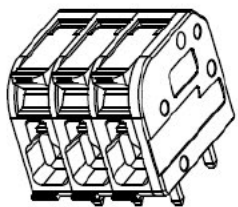
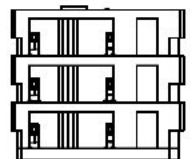
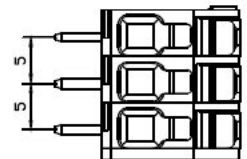
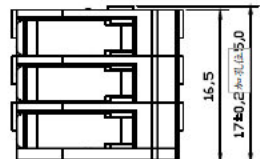
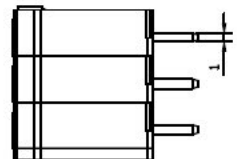


Version	Rev. Content	Change Person



Technical Data	
Item	
Rated Electrical Parameters	250V/ 32A
Wire Range	0.2~4.0mm ²
Insulation Resistance	DC500V 500MΩ above
Temperature	-40°C~+105°C
Material and plating	
Housing	PA66 (UL94 V-0)
Contact	Brass+SN / Stainless Steel



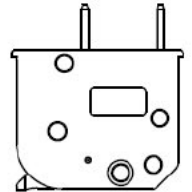
(Product Number Code):
SM C09 35016 XX SC1

Series No.

No. of poles

Y: Housing Color

1: Grey	7: Transparent
2: Blue	8: White
3: Black	9: Yellow
4: Green	
5: Orange	
6: Red	



Spring Terminal Block with Lever RM5,0 0,2-4mm ²		Tolerance Range	
XX: Number of Poles		0.00	±0.05
P/N: SM C09 35016 XX SC1		0.0	±0.10
SCHMID-M	Drawing NO. :		
	Units :mm	Page : 1/1	Angle X ±2° XX ±1°
	Scale :FULL		Version : TO