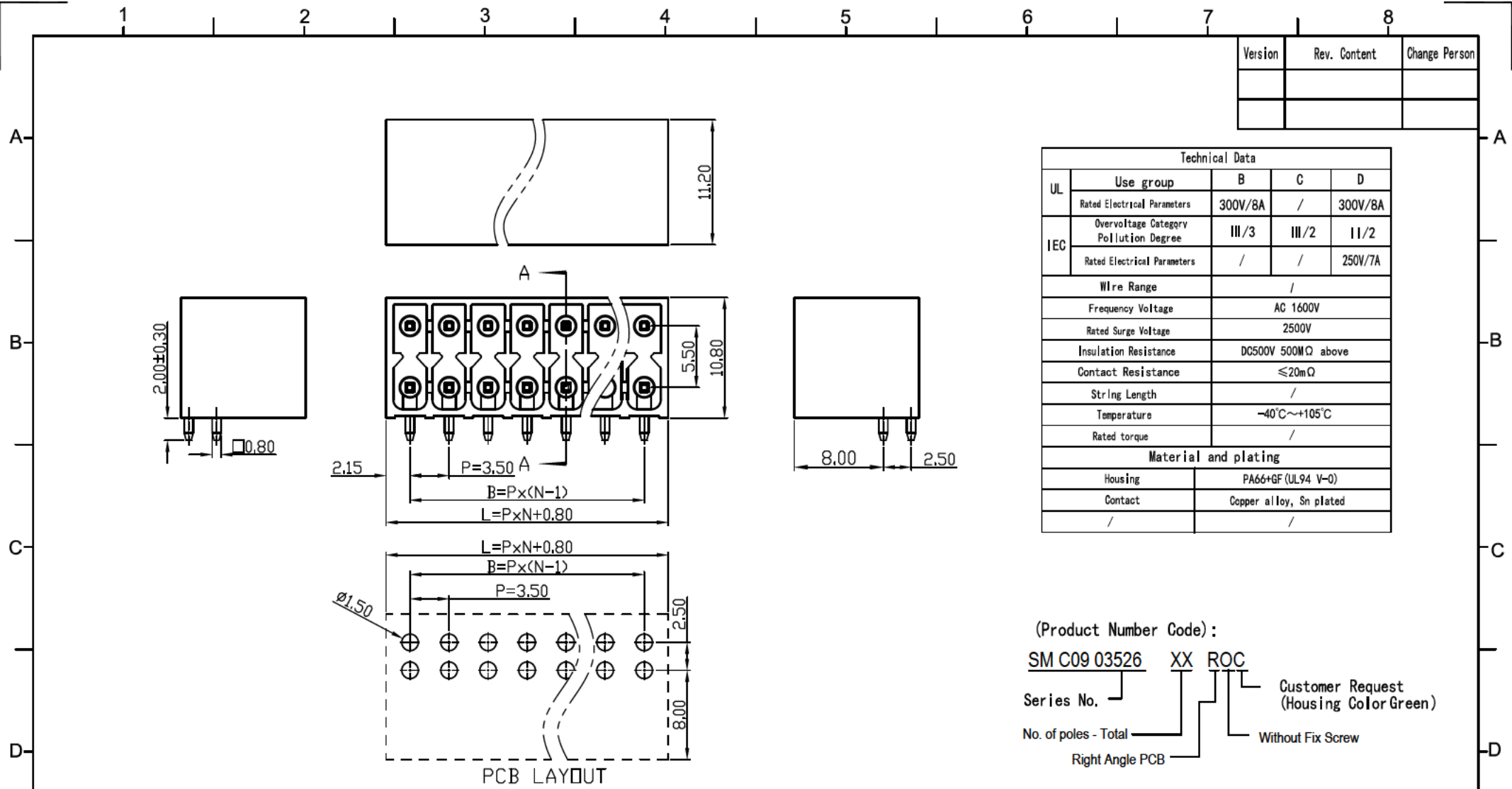


Version	Rev. Content	Change Person

Technical Data				
UL	Use group	B	C	D
	Rated Electrical Parameters	300V/8A	/	300V/8A
IEC	Overvoltage Category	III/3	III/2	II/2
	Pollution Degree	/	/	250V/7A
Wire Range		/		
Frequency Voltage		AC 1600V		
Rated Surge Voltage		2500V		
Insulation Resistance		DC500V 500MΩ above		
Contact Resistance		≤20mΩ		
String Length		/		
Temperature		-40°C~+105°C		
Rated torque		/		
Material and plating				
Housing		PA66+GF (UL94 V-0)		
Contact		Copper alloy, Sn plated		
/		/		



(Product Number Code):
SM C09 03526 XX ROC
 Series No. Customer Request (Housing Color Green)
 No. of poles - Total Without Fix Screw
 Right Angle PCB

P=3.5mm, N for hole digits, Significant Digits: 2*02P~24P

N	02P	03P	04P	05P	06P	07P	08P	09P	10P	11P	12P	13P
L	7.80	11.30	14.80	18.30	21.80	25.30	28.80	32.30	35.80	39.30	42.80	46.30
B	3.50	7.00	10.50	14.00	17.50	21.00	24.50	28.00	31.50	35.00	38.50	42.00
N	14P	15P	16P	17P	18P	19P	20P	21P	22P	23P	24P	
L	49.80	53.30	56.80	60.30	63.80	67.30	70.80	74.30	77.80	81.30	84.80	
B	45.50	49.00	52.50	56.00	59.50	63.00	66.50	70.00	73.50	77.00	80.50	

SCHMID-M

Type: SM C09 03526 XX ROC

Approval: Drawing NO.:

Audit: Units: mm Page: 1/1

Design: Scale: FULL

Tolerance Range	
150~	±1.50
60~150	±1.00
30~60	±0.60
6~30	±0.40
0~6	±0.25
Angle	X ±2°
	XX ±1°

Version: TO