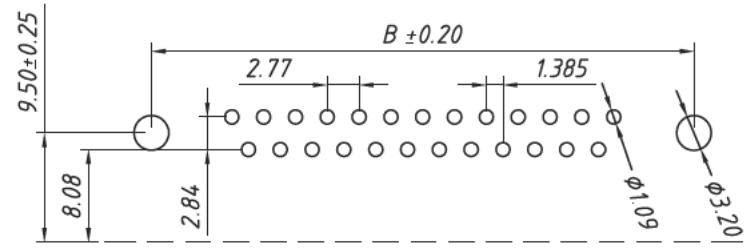
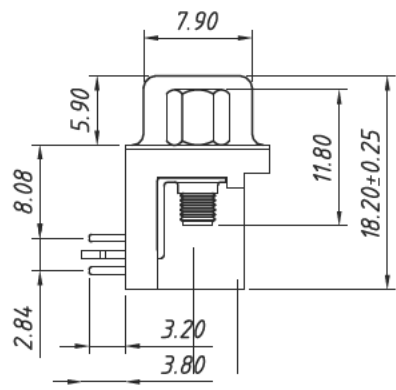
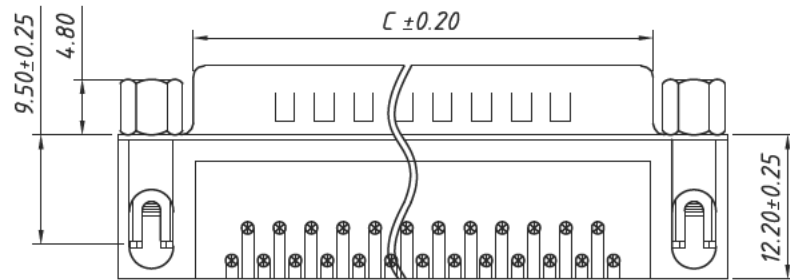


Material:
 Housing: PBT+30% Glass filled ,UL94V-0
 Contacts: Brass ,Gold Plating.
 Shell: Steel, Nickel Plating

Electrical Characteristics:
 Current Rating: 5 AMP
 Insulator Resistance: 1000MΩ Min. at DC 500V
 Withstanding Voltage: 500V AC (rms) for 1 minute
 Contact Resistance: 20mΩ Max. Initial
 Operating Temperature: -55°C ~ +105°C



RECOMMENDED PCB LAYOUT
 TOLERANCE: ±0.05mm

TOLERANCE		
SCALE	UNIT mm	
DRAW Walter	DATE 6.2.2022	TITLE
CHECK Breese	REV	SM C05 0550 XX MD, D=8,08mm
		DESCRIPTION
		D-SUB Connector, R/A, Through Hole, D=8,08mm, Male