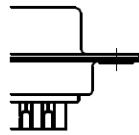
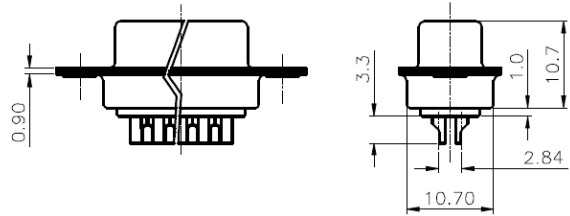
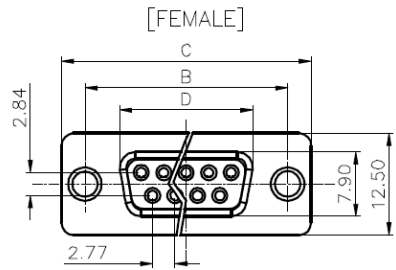
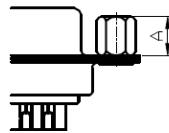


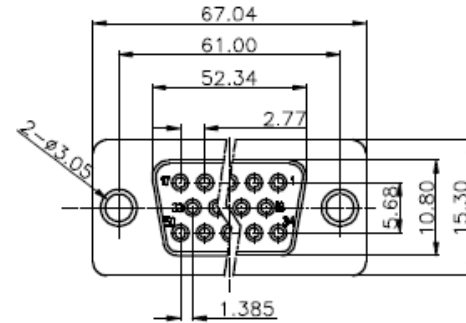
REV.	DESCRIPTION	DRAWN	CHECKED	APPROVED
A	NEW RELEASE	ZQJ 11/18/2014	~	CJJ 11/18/2014
B	ADD 50pin drawing	ZQJ 11/18/2014	~	CJJ 11/18/2014
C	ADD BR TYPE	CJJ 11/18/2014	~	CJJ 11/18/2014
D	REDRAWING	CJJ 11/18/2014	~	CJJ 11/18/2014
E	ADD P/N CODE	CJJ 11/18/2014		



Standard



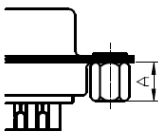
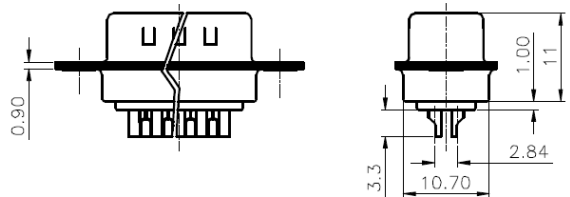
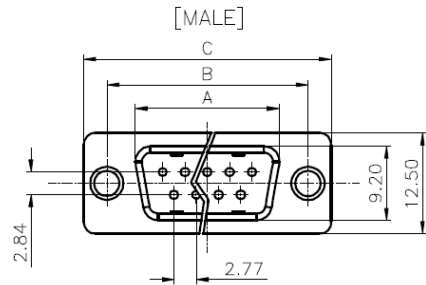
CC TYPE



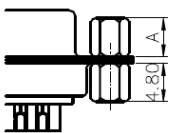
50pin Female Figure

NOTES:

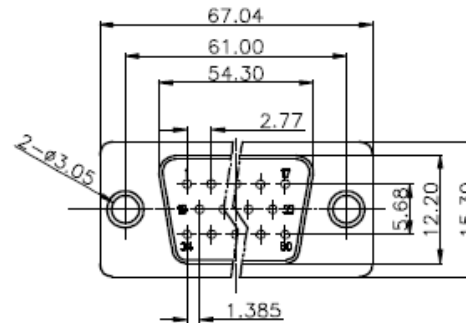
- ELECTRICAL CHARACTERISTICS:
 - CONTACT RESISTANCE: 20mΩ Max. INITIAL.
 - DIELECTRIC WITHSTANDING VOLTAGE: 500V AC(rms) FOR 1 MINUTE.
 - INSULATION RESISTANCE: 1000MΩ Min.
- ENVIRONMENT CHARACTERISTICS:
 - TEMPERATURE RANGE: -40°C~+105°C.



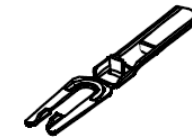
CS TYPE



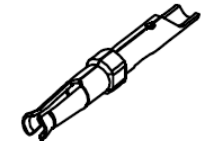
CSH TYPE



50pin Male Figure



JY Type



CT Type

- Y - M(Male)
 F(Female) - CT Type
 G(Female) - JY Type
 XX = Number of Pins (9,15, 25, 37, 50)

Dimension

Position	A±0.2	B±0.2	C±0.3	D
9	17.90	24.99	30.80	16.33
15	26.50	33.32	39.14	24.66
25	40.00	47.04	53.04	38.38
37	56.50	63.50	69.32	54.84

GENERAL TOLERANCE	X.	±0.60
	.X	±0.38
	.XX	±0.25
SCALE	1 : 1	UNIT mm
DRAW	Braun	DATE 29.11.2018
CHECK	Walter	REV



SCHMID-M

TITLE
SM C05 0540 XX Y

DESCRIPTION
 D - SUB STANDARD SOLDER TYPE