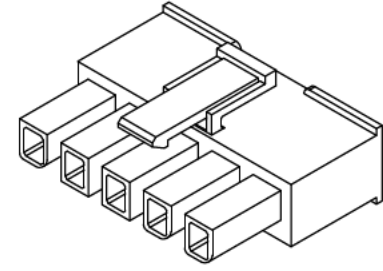
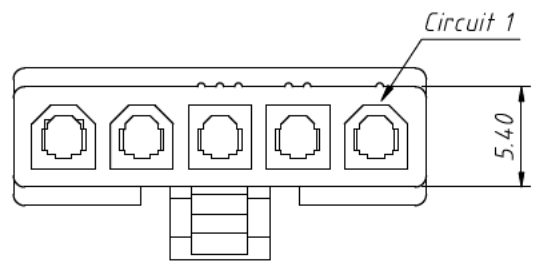
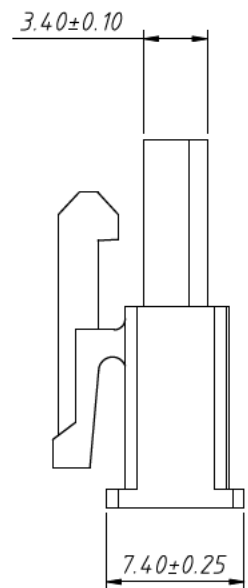
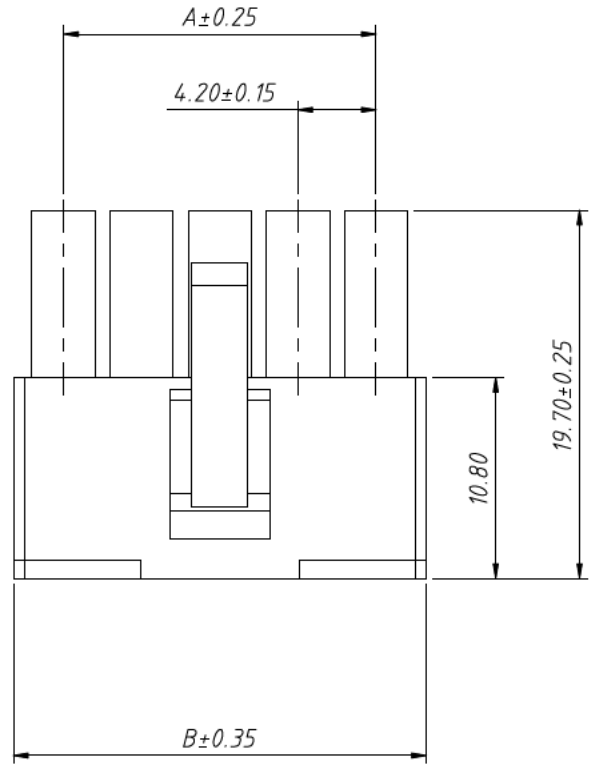


Rev.	DESCRIPTION	DRAWN	CHECKED	APPROVED
A	NEW RELEASE		~	



Pin	Dimensions(mm)	
	A	B
02	4.20	9.60
03	8.40	13.80
04	12.60	18.00
05	16.80	22.20
06	21.00	26.40



Material:
Housing: PA66, UL 94V-2

Electrical Characteristics:
Rated Current: 7.0A AC, DC
Voltage rating: 600V AC, DC
Temperature range: -25°C ~ +85°C
Insulator Resistance: 1000M Ω Min
Withstanding Voltage: 1500V AC/minute
Contact Resistance: 20m Ω Max

GENERAL TOLERANCE		ANGEL TOLERANCE		PROJECTION		TITLE
.X	+/-15	.X	+/-3	UNITS	MM	4.20mm connector - Single Row Housing
.X	+/-10	.X	+/-2	SHEET SIZE	A4	
.XX	+/-5	.XX	+/-1			PART NO. SM C03 5150 XX SH
DRAWING TYPE		CUSTOMER				XX: Number of poles
SCALE		SHEET				
DRAWING NO.		1 OF 1				