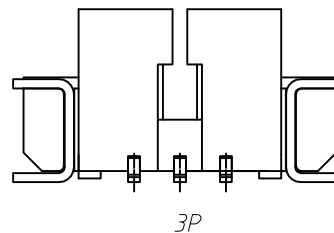
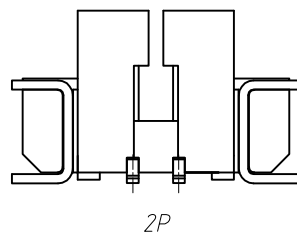
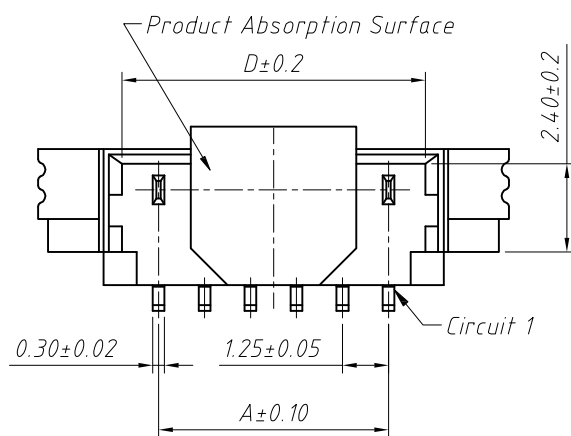


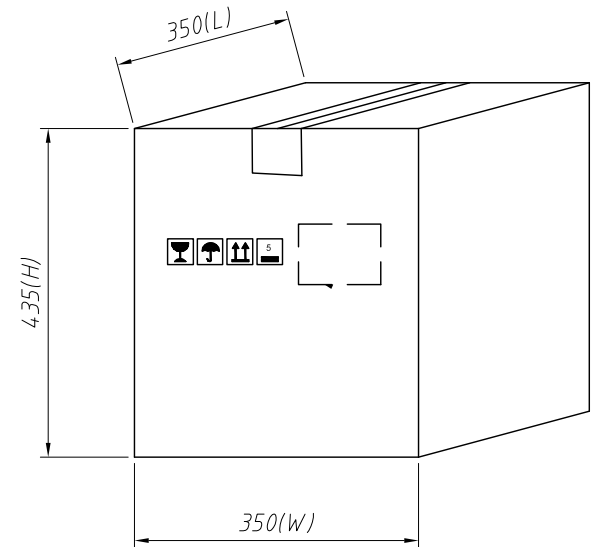
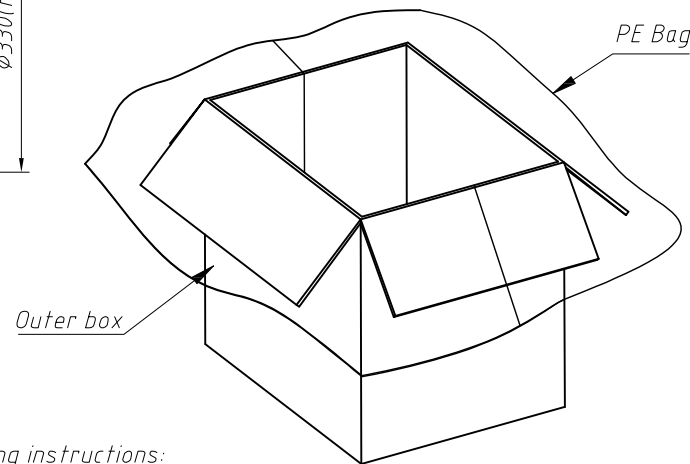
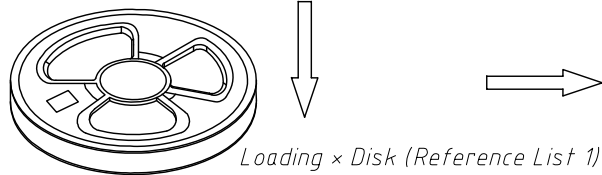
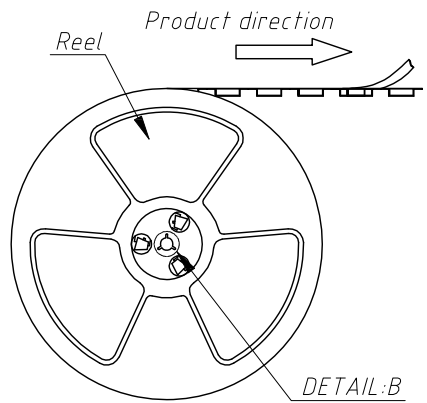
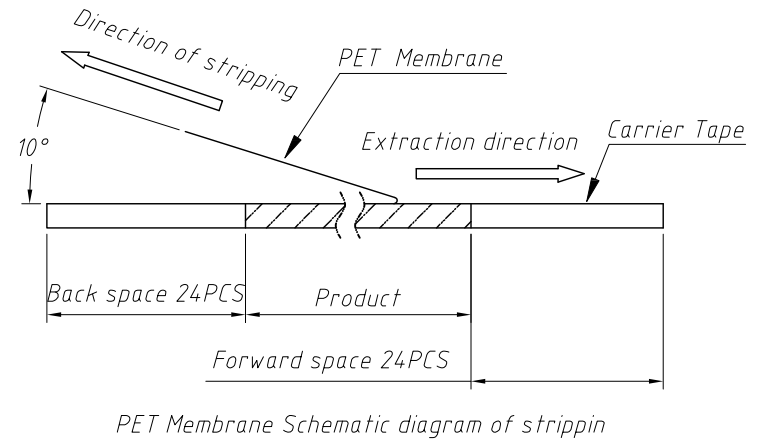
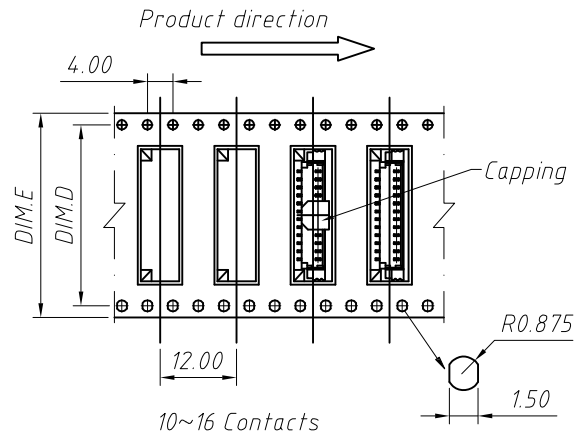
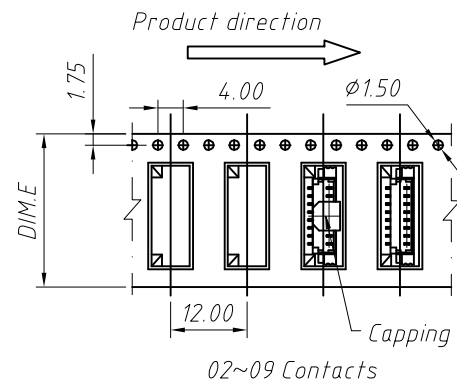
Suggested PCB Layout



Material:  
 Insulator: LCP UL94V-0, Beige  
 Contacts: Phosphor Bronze, Tin Plated  
 Solder Tab: Brass, Tin Plated  
 Electrical Specification:  
 Poles: 02 to 16  
 Contact resistance:  $\leq 20m\Omega$   
 Insulation resistance:  $\geq 100M\Omega$   
 Rated voltage: 125V AC DC  
 Rated current: 1.0A AC DC  
 Withstand Voltage: 500V AC/minute  
 Temperature Range:  $-25^{\circ}C \sim +105^{\circ}C$

Circuit	Dimensions(mm)				Circuit	Dimensions(mm)			
	A	B	C	D		A	B	C	D
02	1.50	4.25	7.75	3.05	10	11.25	14.25	17.75	13.05
03	2.50	5.50	9.00	4.30	11	12.50	15.50	19.00	14.30
04	3.75	6.75	10.25	5.55	12	13.75	16.75	20.25	15.55
05	5.00	8.00	11.50	6.80	13	15.00	18.00	21.50	16.80
06	6.25	9.25	12.75	8.05	14	16.25	19.25	22.75	18.05
07	7.50	10.50	14.00	9.30	15	17.50	20.50	24.00	19.30
08	8.75	11.75	15.25	10.55	16	18.75	21.75	25.25	20.55
09	10.00	13.00	16.50	11.80					

GENERAL TOLERANCE	PROJECTION		Description:
.X ±0.30	UNITS	mm	Pitch 1.25mm Vertical SMT Wafer PN: SM C03 1359 XX WS
.X ±0.20	SCALE	1:1	
.XX ±0.10	Draw by:	Jenny	
ANGLE TOLERANCE	Check by:		
.X ±5°	Date	2018-03-01	<b>SCHMID-M</b>
.X ±3°	SHEET	1 OF 1	
.XX ±2°			



Packaging instructions:  
Pack the finished products into reels, each with 1000 PCS.

Circuits	DIM.D	DIM.E	Q'ty/Reel	Packing Reel/Caron
02-03 PIN	--	16	1000 PCS	20/Reel
04-09 PIN	--	24	1000 PCS	15/Reel
10-13 PIN	28.4	32	1000 PCS	11/Reel
114-16 PIN	40.4	44	1000 PCS	8/Reel

GENERAL TOLERANCE	PROJECTION		Description:
.X ±0.30	UNITS	mm	Packaging Specification Pitch 1.25mm Vertical SMT PN: SM C03 1359 XX WS
.X ±0.20	SCALE	1:1	
.XX ±0.10	Draw by:	Jenny	
ANGLE TOLERANCE	Check by:		
.X ±5°	Date	2018-03-01	<b>SCHMID-M</b>
.X ±3°	SHEET	1 OF 1	
.XX ±2°			