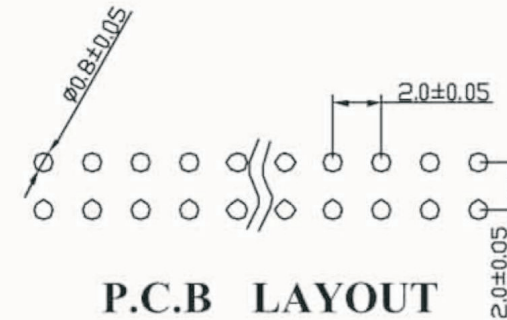


NOTES: UNLESS OTHERWISE SPECIFIED

1. MATERIAL:
INSULATOR: PBT
CONTACT: BRASS
2. CHARACTERISTICS:
CURRENT RATING : 2.0A @80°C AMBIENT
VOLTAGE RATING : 250V AC,DC
3. OPERATING TEMP RANGE :
-40°C ~ +105°C WITH TIN.
-40°C ~ +125°C WITH GOLD
4. CONTACT RESISTANCE:
INITIAL: 20m OHM MAX.
AFTER ENVIRONMENTAL TEST: 40m OHM MAX.
5. INSULATION RESISTANCE:
INITIAL: 1000M OHM MIN.
AFTER HUMIDITY AND THERMAL SHOCK TEST: 500M OHM MIN.
6. DIELECTRIC WITHSTANDING VOLTAGE: 1000V AC/MIN
7. MECHANICAL PERFORMANCE:
REATENTION FORCE: 500 GRAMS AVERAGE.
8. MAX PROCESSING TEMP:
PBT: 200°C FOR 20 SECONDS



UNIT

SCALE

PART NAME

MM

SCHMID-M

2.0mm PIN HEADER H:2.0mm DUAL ROW
180° XXP C=3.9mm D=2.8mm LOW-LEAD

APPD.

CKD.

TOLERANCE

PART NO.

REV.

2005/10/13

DRAWING.

APPROVED

SM C02 6200 XXBS

A