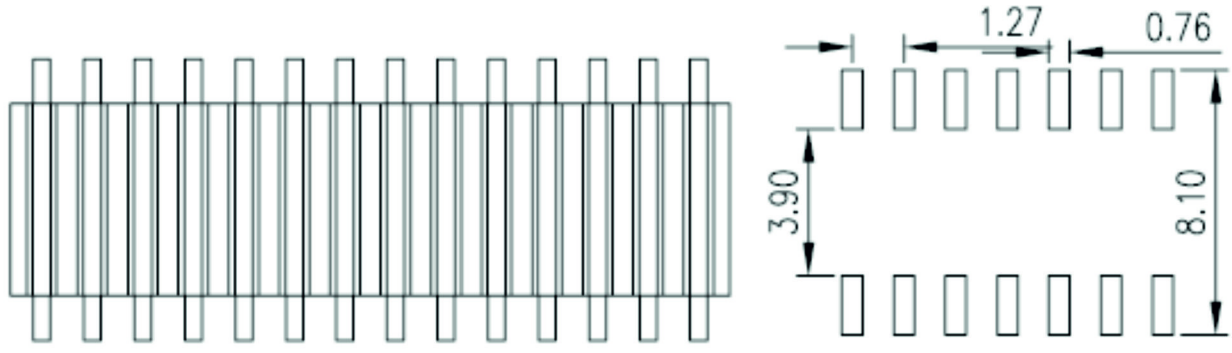
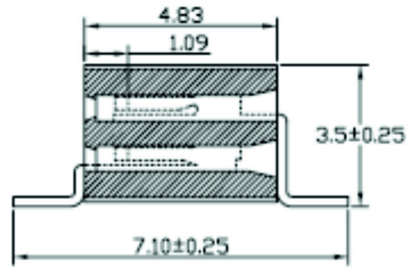
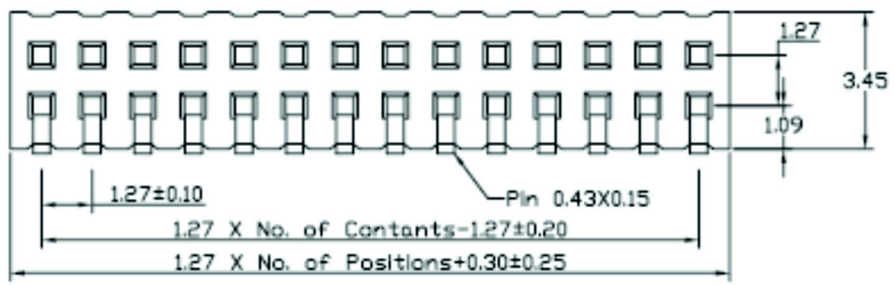


REV.	LOCAS.	DESCRIPTION	DATE	DRAWN
01				



Insulation Resistance: 1000M Min.
 Dielectric Withstanding: 300V AC
 crnce: 20m MaxΩ
 Operating Temperature: -40°C to +105°C
 Materials

Insulation Material: Polyester, UL 94V-0



SCHMID-M

REV.	UNIT.	SCALE.	PAGE.
01	mm	3:1	1/1

GENERAL TOLERANCE	
X. ± 5°	X. ± 0.30
.X' ± 2'	.X ± 0.20
.XX' ± 1'	.XX ± 0.15
.XXX' ± 0.5°	.XXX ± 0.10

DESIGN:	DATE:
CHECKED:	DATE:
AUDITED:	DATE:
APPROVED:	DATE:

DATE:
DATE:
DATE:
DATE:

DWG. NO.
PART NO.
SM C02 4835 XX BD T&R Side Entry

TITLE.
1.27 FEMALE HEADER
SINGLE ROW DIP/R TYPE
BASE 3.45H