

1 2 3 4 5 6 7 8 9

F

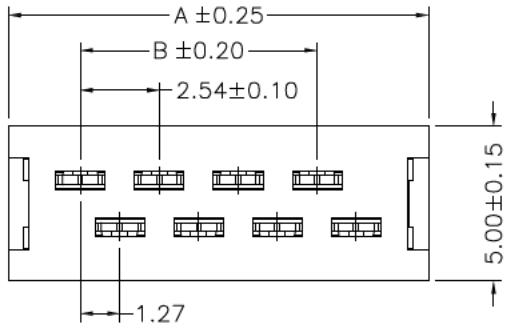
E

D

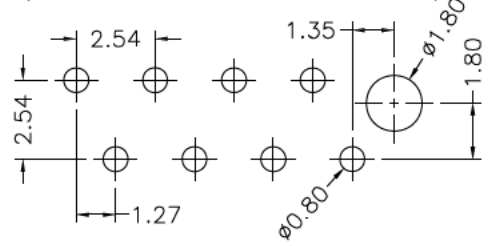
C

B

A



Recommended P.C.B Layout(Top Side)
(PCB BOARD TOLERANCE ± 0.05)



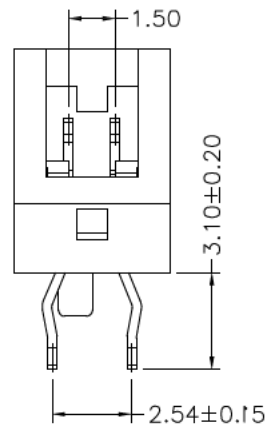
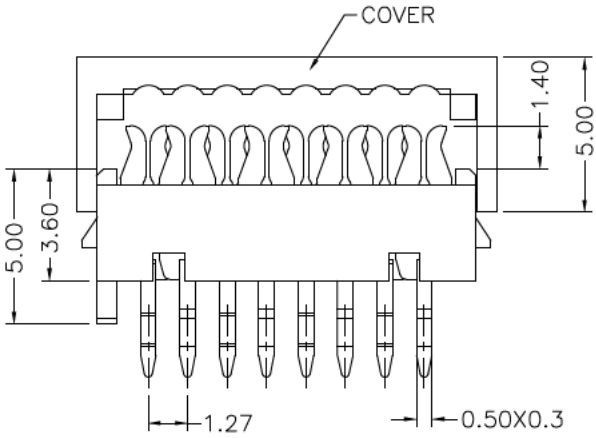
SPECIFICATIONS

Material

Insulator : Nylon 6T, glass reinforced, rated UL 94V-0
Contact : Phosphor Bronze

Electrical

Current Rating : 1 Amp
Contact Resistance : 30 mΩ max.
Insulation Resistance : 3000 MΩ min.
Dielectric Withstanding Voltage : 500V AC for 1 minute
Operating Temperature : -40°C to +105°C



Dimensional & Ordering Information

Circuit	Part No.	Dimension		Q'TY /Tube
		A	B	
04	SM C02 3132g-04 P	8.45	2.54	69pcs
06	SM C02 3132g-06 P	10.99	5.08	53pcs
08	SM C02 3132g-08 P	13.53	7.62	43pcs
10	SM C02 3132g-10 P	16.07	10.16	36pcs
12	SM C02 3132g-12 P	18.61	12.70	31pcs
14	SM C02 3132g-14 P	21.15	15.24	27pcs
16	SM C02 3132g-16 P	23.69	17.78	24pcs
18	SM C02 3132g-18 P	26.23	20.32	22pcs
20	SM C02 3132g-20 P	28.77	22.86	20pcs
22	SM C02 3132g-22 P	31.31	25.40	17pcs
24	SM C02 3132g-24 P	33.85	27.94	14pcs
26	SM C02 3132g-26 P	36.39	30.48	11pcs

SCHMID-M

GENERAL TOLERANCE

X.* ± 5.0°	X. ± 0.30
.X* ± 3.0°	.X ± 0.25
.XX* ± 2.0°	.XX ± 0.15
.XXX* ± 1.0°	.XXX ± 0.10

DESIGN:
CHECK:
AUDIT:
APPROVE:

DATE: 2022.02.02
DATE: 2022.02.03
DATE: 2022.02.03
DATE: 2022.02.03

DWG. NO.:
PART NO.:
SM C02 3132g XX P

TITLE:
RM 2.54 Micro Match DIP Plug (IDC)

REV.: 01	UNIT.: mm	SCALE.: 1:1	PAGE.: 1/1
--------------------	---------------------	-----------------------	----------------------

1 2 3 4 5 6 7 8 9

F

E

D

C

B

A