

**Notes:**

**1. Electrical Characteristics:**

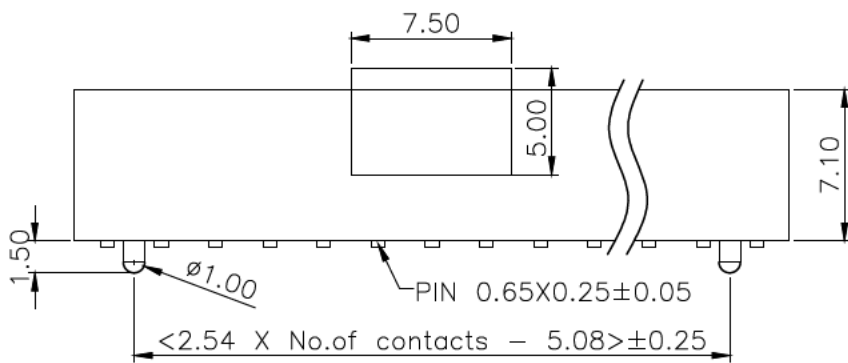
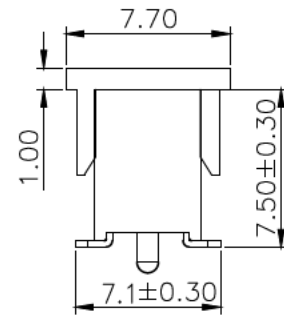
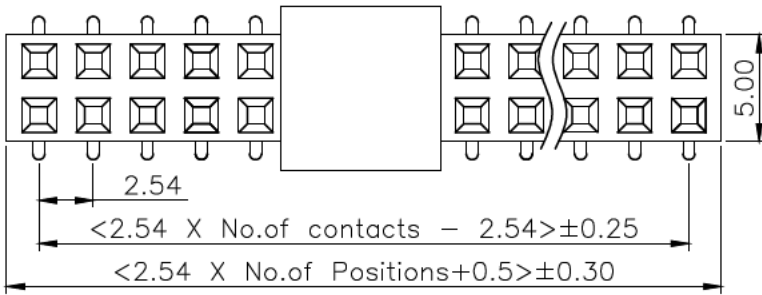
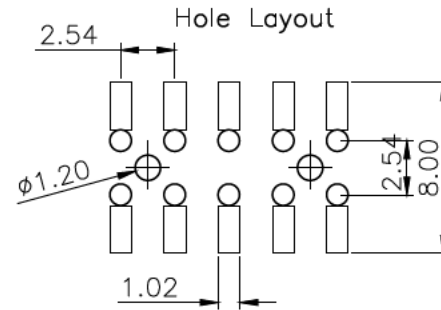
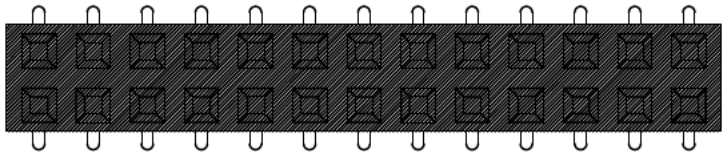
- 1.1 Contact Resistance: 20mΩ Max
- 1.2 Dielectric Withstanding Voltage: 600V AC(rms) for 1 Minute
- 1.3 Insulation Resistance: 1000mΩ Min
- 1.4 Current Rating: 3A
- 1.5 Voltage Rating: 250V AC rms

**2. Environment Characteristics:**

- 2.1 Temperature: -65°C ~ +125°C
- 2.2 Soler Temperature +260°C 3-5S Max

**3. Materials:**

- 3.1 Contact Materials: Copper Alloy
- 3.2 Contact Plating: Tin or Gold plate
- 3.3 Insulator Materials: PA46 / PA6T / PA9T, Black, UL94V-0



**SCHMID-M**

**GENERAL TOLERANCE**

X.* ± 5.0°	X. ± 0.30
.X* ± 3.0°	.X ± 0.25
.XX* ± 2.0°	.XX ± 0.15
.XXX* ± 1.0°	.XXX ± 0.10

**DESIGN:** Bauer  
**CHECK:** Werner  
**AUDIT:** Walter  
**APPROVE:** Bauer

**DATE:** 2019.10.28  
**DATE:** 2019.11.01  
**DATE:**  
**DATE:**

**DWG. NO.:** XX.= number of poles  
**PART NO.:** SM C02 2818 XX BD

**TITLE:** 2.54mm Female header, Double Row  
 SMT, with Fix , with Cap

<b>REV.:</b> 01	<b>UNIT.:</b> mm	<b>SCALE.:</b> 1:1	<b>PAGE.:</b> 1/1	
-----------------	------------------	--------------------	-------------------	--