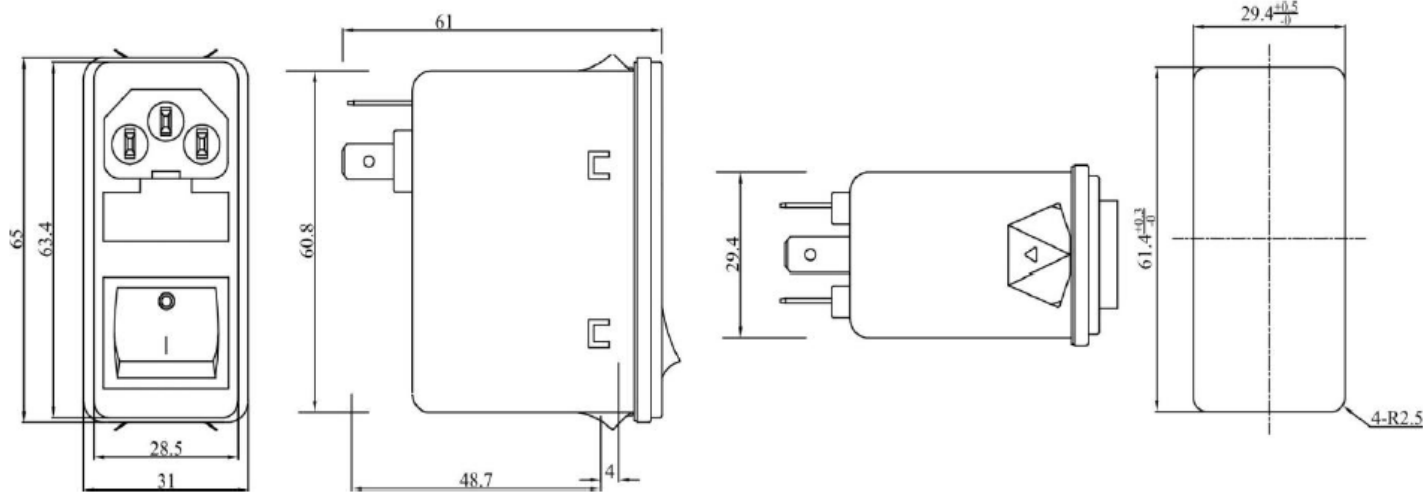


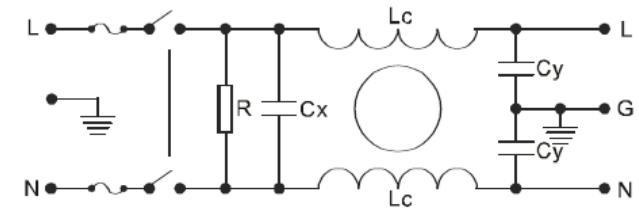
Mechanical Dimension: (mm)



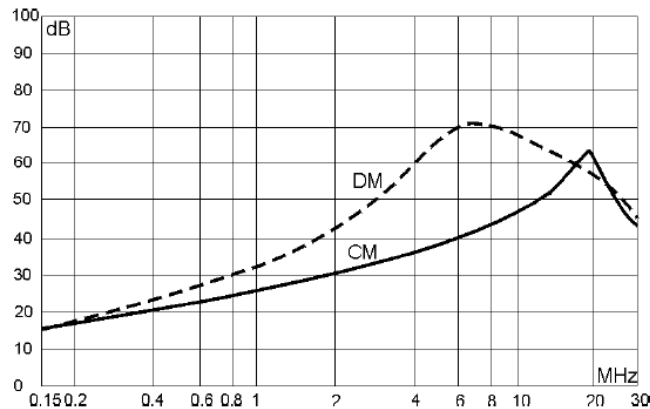
Technical Data:



Rated Voltage: 120/250VAC
 Rated Current: 10A
 Operating Frequency: 50/60Hz
 Test Voltage: Line to Line: 1450VDC
 Line to Ground: 2000VAC
 Climatic Category: 25/085/21

Electrical Schematic:



Insertion Loss in dB: (Measured in 50Ω system ,as IEC/CISPR NO.17)



TOLERANCE		
SCALE	UNIT mm	
DRAW Walter	DATE 03.11.2021	TITLE
CHECK Vanda	REV	SE8400S-10-01
		DESCRIPTION
		EMC/EMI Filter with Fuse Holder and Switch 10A