

The SE 8000 Series is General Purpose IEC Inlet Filter



SE 8000



SE 8000S



SE 8000S1

Mounting type: screw, snap-in



### Description :

- Compact unit, light weight, low price, easy to install
- Rear/front or snap-in mounting (S and S1 type)
- High quality components ensure the safety and reliability of filters
- Optional medical versions (B type) comply with the requirements of IEC/EN 60601-1 for creepage and clearance, leakage current and high potential testing.
- Wide mounting flanges available.

### Typical Applications :

- Single-phase power supplies, switch-mode power supplies.
- Small to medium-sized machines and household equipment.
- Portable electrical and electronic equipment.
- Test and measurement equipment.
- Medical equipment.

### Electrical Schematic :

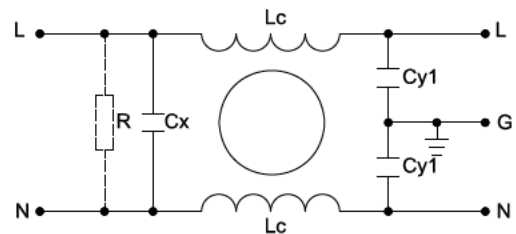


Fig 1

### Specification :

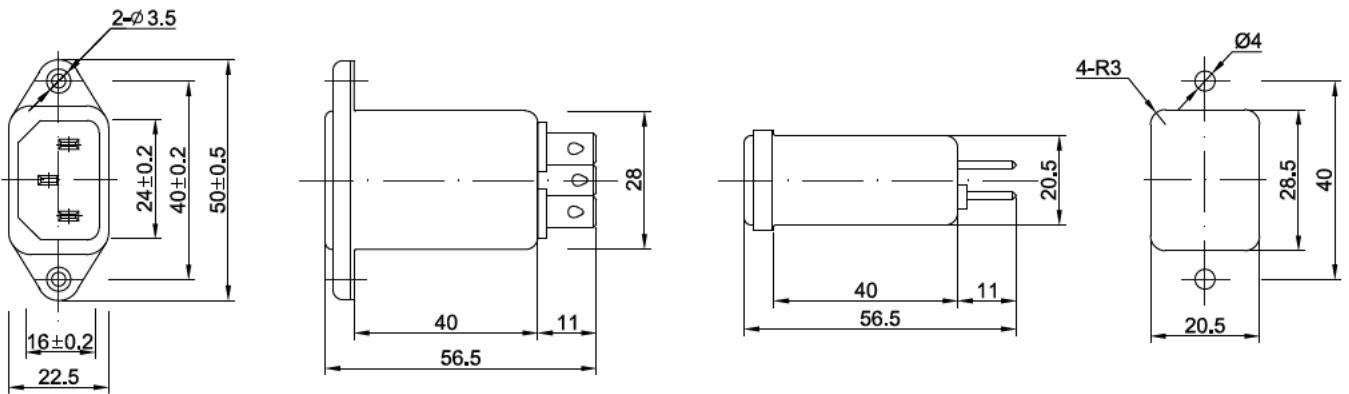
Rated Voltage:	120/250 VAC
Rated Current:	1A~10 A
Operating Frequency:	50/60 Hz
Temperature Range :	25/085/21
Test Voltage ( 1min ):	
Line to Ground:	2000 VAC
Line to Line:	1450 VDC

**Filter Selection Table :**

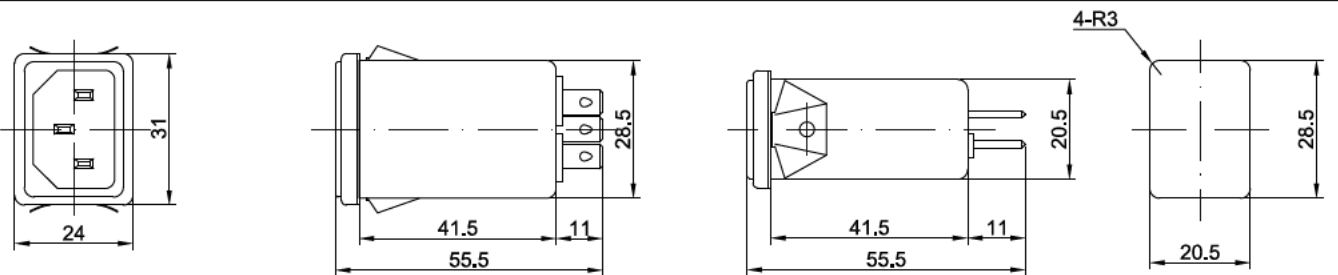
Filter	Rated current (A)	Rated voltage (V)	Leakage Current (mA)	Input/Output connections	Electrical Schematic	Dimension
SE8000-1-01	1	120/250	0.5	01	1	1
SE8000-3-01	3	120/250	0.5	01	1	1
SE8000-6-01	6	120/250	0.5	01	1	1
SE8000-10-01	10	120/250	0.5	01	1	1
SE8000S-1-01	1	120/250	0.5	01	1	2
SE8000S-3-01	3	120/250	0.5	01	1	2
SE8000S-6-01	6	120/250	0.5	01	1	2
SE8000S-10-01	10	120/250	0.5	01	1	2
SE8000S1-1-01	1	120/250	0.5	01	1	3
SE8000S1-3-01	3	120/250	0.5	01	1	3
SE8000S1-6-01	6	120/250	0.5	01	1	3
SE8000S1-10-01	10	120/250	0.5	01	1	3

**Mechanical Dimension:**

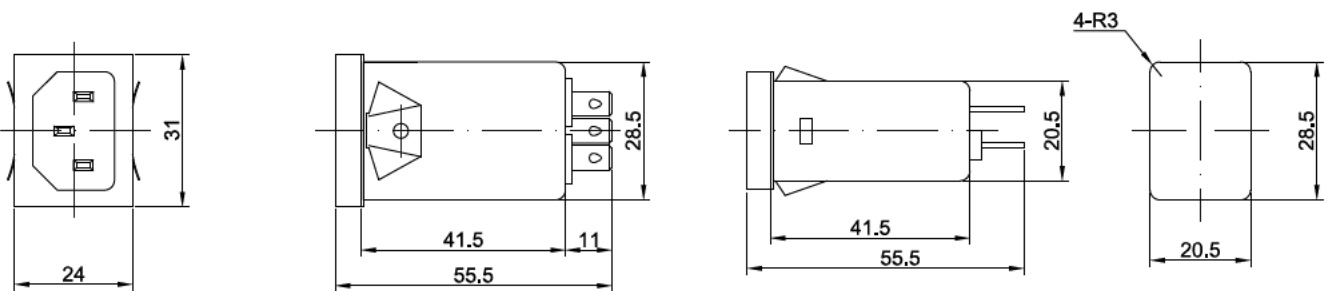
All dimensions in mm; 1 inch=25.4mm



**Fig 1**



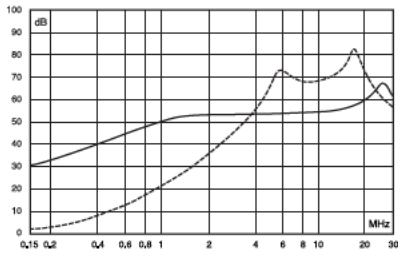
**Fig 2**



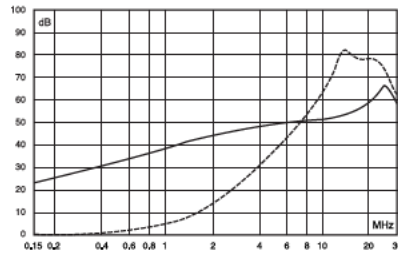
**Fig 3**

## Insertion Loss in dB:

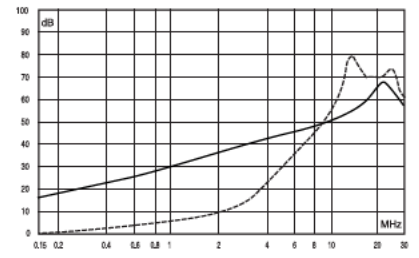
(Measured in 50Ω system, as IEC/CISPR NO.17)



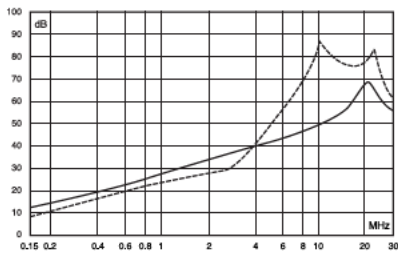
1A



3A



6A



10A

----- Differential Mode  
 ——— Common Mode