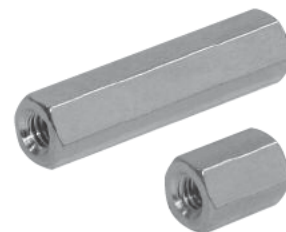
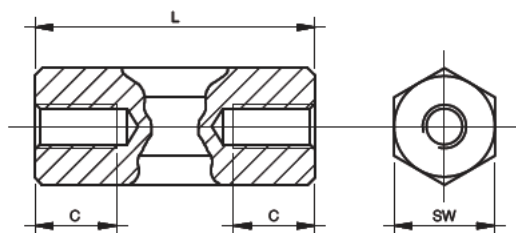


SW 5

Thread M 3



Item-Nr.	SW	Dimension (mm)		Thread
		L	C	
SW5-5mm-IN/IN	5	5	5	M 3
SW5-6mm-IN/IN	5	6	6	M 3
SW5-7mm-IN/IN	5	7	7	M 3
SW5-8mm-IN/IN	5	8	8	M 3
SW5-9mm-IN/IN	5	9	9	M 3
SW5-10mm-IN/IN	5	10	10	M 3
SW5-11mm-IN/IN	5	11	11	M 3
SW5-12mm-IN/IN	5	12	12	M 3
SW5-13mm-IN/IN	5	13	13	M 3
SW5-14mm-IN/IN	5	14	14	M 3
SW5-15mm-IN/IN	5	15	15	M 3
SW5-16mm-IN/IN	5	16	16	M 3
SW5-17mm-IN/IN	5	17	17	M 3
SW5-18mm-IN/IN	5	18	18	M 3
SW5-20mm-IN/IN	5	20	20	M 3
SW5-25mm-IN/IN	5	25	6	M 3
SW5-30mm-IN/IN	5	30	6	M 3
SW5-35mm-IN/IN	5	35	6	M 3
SW5-40mm-IN/IN	5	40	6	M 3
SW5-45mm-IN/IN	5	45	6	M 3
SW5-50mm-IN/IN	5	50	6	M 3

Material: brass (CuZn39Pb3)
 Surface: nickel plated
 Intermediate lengths and special designs on request

