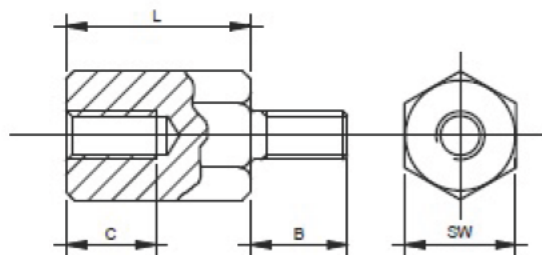


SW5,5 * SW7
Thread M3 * M4



Item-Nr.	SW	Dimensison (mm)			Thread
		L	B	C min.	
SW5,5-5mm, Ex/In M3 L=5mm Brass-Ni	5,5	5	8	2,5	M 3
SW5,5-8mm, Ex/In M3 L=8mm Brass-Ni	5,5	8	8	5	M 3
SW5,5-10mm, Ex/In M3 L=10mm Brass-Ni	5,5	10	8	6	M 3
SW5,5-12mm, Ex/In M3 L=12mm Brass-Ni	5,5	12	8	8	M 3
SW5,5-15mm, Ex/In M3 L=15mm Brass-Ni	5,5	15	8	8	M 3
SW5,5-18mm, Ex/In M3 L=18mm Brass-Ni	5,5	18	8	8	M 3
SW5,5-20mm, Ex/In M3 L=20mm Brass-Ni	5,5	20	8	8	M 3
SW5,5-25mm, Ex/In M3 L=25mm Brass-Ni	5,5	25	8	8	M 3
SW5,5-30mm, Ex/In M3 L=30mm Brass-Ni	5,5	30	8	8	M 3
SW5,5-35mm, Ex/In M3 L=35mm Brass-Ni	5,5	35	8	8	M 3
SW5,5-40mm, Ex/In M3 L=40mm Brass-Ni	5,5	40	8	8	M 3
SW7-8mm, Ex/In M4 L=8mm Brass-Ni	7	8	8	5	M 4
SW7-10mm, Ex/In M4 L=10mm Brass-Ni	7	10	8	6	M 4
SW7-12mm, Ex/In M4 L=12mm Brass-Ni	7	12	8	8	M 4
SW7-13mm, Ex/In M4 L=13mm Brass-Ni	7	13	8	8	M 4
SW7-15mm, Ex/In M4 L=15mm Brass-Ni	7	15	8	8	M 4
SW7-16mm, Ex/In M4 L=16mm Brass-Ni	7	16	8	8	M 4
SW7-17mm, Ex/In M4 L=17mm Brass-Ni	7	17	8	8	M 4
SW7-18mm, Ex/In M4 L=18mm Brass-Ni	7	18	8	8	M 4
SW7-20mm, Ex/In M4 L=20mm Brass-Ni	7	20	8	8	M 4
SW7-25mm, Ex/In M4 L=25mm Brass-Ni	7	25	8	8	M 4
SW7-30mm, Ex/In M4 L=30mm Brass-Ni	7	30	8	8	M 4
SW7-35mm, Ex/In M4 L=35mm Brass-Ni	7	35	8	8	M 4
SW7-40mm, Ex/In M4 L=40mm Brass-Ni	7	40	8	8	M 4

Material:Brass (CuZn39Pb3)

Surface: nickel-plated

Intermediate lengths and special designs on request

