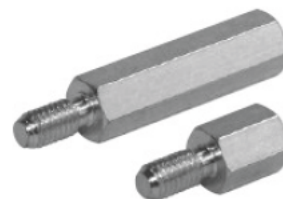
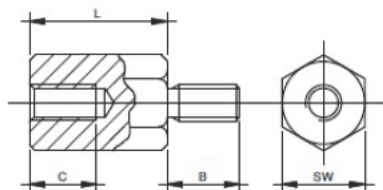


SW5,5 * SW6
Thread M3



Artikel-Nr.	SW	Dimension (mm)			Thread
		L	B	C min.	
SW5,5 - 5 mm, Ex/In,M3	5,5	5	6	2,5	M3
SW5,5 - 6 mm, Ex/In,M3	5,5	6	6	3	M3
SW5,5 - 8 mm, Ex/In,M3	5,5	8	6	5	M3
SW5,5 - 10 mm, Ex/In,M3	5,5	10	6	6	M3
SW5,5 - 12 mm, Ex/In,M3	5,5	12	6	6	M3
SW5,5 - 15 mm, Ex/In,M3	5,5	15	6	6	M3
SW5,5 - 18 mm, Ex/In,M3	5,5	18	6	6	M3
SW5,5 - 20 mm, Ex/In,M3	5,5	20	6	6	M3
SW5,5 - 25 mm, Ex/In,M3	5,5	25	6	6	M3
SW5,5 - 30 mm, Ex/In,M3	5,5	30	6	6	M3
SW5,5 - 35 mm, Ex/In,M3	5,5	35	6	6	M3
SW5,5 - 40 mm, Ex/In,M3	5,5	40	6	6	M3
SW6 - 8 mm, Ex/In,M3	6	8	6	5	M3
SW6 - 10 mm, Ex/In,M3	6	10	6	6	M3
SW6 - 12 mm, Ex/In,M3	6	12	6	6	M3
SW6 - 15 mm, Ex/In,M3	6	15	6	6	M3
SW6 - 17 mm, Ex/In,M3	6	17	6	6	M3
SW6 - 18 mm, Ex/In,M3	6	18	6	6	M3
SW6 - 20 mm, Ex/In,M3	6	20	6	6	M3
SW6 - 25 mm, Ex/In,M3	6	25	6	6	M3
SW6 - 30 mm, Ex/In,M3	6	30	6	6	M3
SW6 - 35 mm, Ex/In,M3	6	35	6	6	M3
SW6 - 40 mm, Ex/In,M3	6	40	6	6	M3
SW6 - 45 mm, Ex/In,M3	6	45	6	6	M3
SW6 - 50 mm, Ex/In,M3	6	50	6	6	M3

Material: Free-cutting steel (9SMnPb28K)

Surface: bright galvanized

Intermediate lengths and special designs on request

