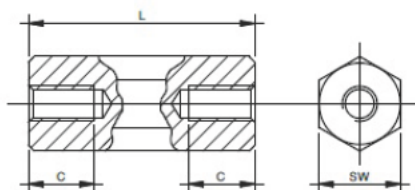


SW5,5  
Thread M3



Item-Nr.	Sw	Dimension (mm)		Thread
		L	C	
SW-5,5-5mm-In/In-M3 Steel	5,5	5	5	M 3
SW-5,5-8mm-In/In-M3 Steel	5,5	8	8	M 3
SW-5,5-8,5mm-In/In-M3 Steel	5,5	8,5	8,5	M 3
SW-5,5-10mm-In/In-M3 Steel	5,5	10	10	M 3
SW-5,5-12mm-In/In-M3 Steel	5,5	12	12	M 3
SW-5,5-12,5mm-In/In-M3 Steel	5,5	12,5	12,5	M 3
SW-5,5-13,5mm-In/In-M3 Steel	5,5	13,5	13,5	M 3
SW-5,5-15mm-In/In-M3 Steel	5,5	15	15	M 3
SW-5,5-17mm-In/In-M3 Steel	5,5	17	17	M 3
SW-5,5-18mm-In/In-M3 Steel	5,5	18	18	M 3
SW-5,5-20mm-In/In-M3-steel	5,5	20	20	M 3
SW-5,5-25mm-In/In-M3 Steel	5,5	25	6	M 3
SW-5,5-30mm-In/In-M3 Steel	5,5	30	6	M 3
SW-5,5-35mm-In/In-M3 Steel	5,5	35	6	M 3
SW-5,5-40mm-In/In-M3 Steel	5,5	40	6	M 3
SW-5,5-45mm-In/In-M3 Steel	5,5	45	6	M 3
SW-5,5-50mm-In/In-M3 Steel	5,5	50	6	M 3

Material: Free-cutting steel (9SMnPb28K)

Surface: bright galvanized

Intermediate lengths and special designs on request

