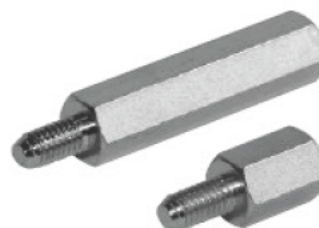
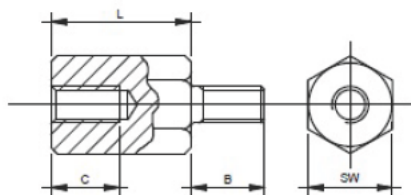


SW4 * SW5 Thread
M2 * M2,5



Item-Nr.	SW	Dimension (mm)			Thread
		L	B	C	
SW4-5mm,Ex/IN,M2,L=5mm, Brass	4	5	5	2,5	M 2
SW4-8mm,Ex/IN,M2,L=8mm, Brass	4	8	5	5	M 2
SW4-10mm,Ex/IN,M2,L=10mm, Brass	4	10	5	5	M 2
SW4-12mm,Ex/IN,M2,L=12mm, Brass	4	12	5	5	M 2

SW5-5mm,Ex/IN,M2,5,L=5mm, Brass	5	5	6	2,5	M 2,5
SW5-8mm,Ex/IN,M2,5,L=8mm, Brass	5	8	6	6	M 2,5
SW5-10mm,Ex/IN,M2,5,L=10mm, Brass	5	10	6	6	M 2,5
SW5-12mm,Ex/IN,M2,5,L=12mm, Brass	5	12	6	6	M 2,5
SW5-15mm,Ex/IN,M2,5,L=15mm, Brass	5	15	6	6	M 2,5
SW5-18mm,Ex/IN,M2,5,L=18mm, Brass	5	18	6	6	M 2,5
SW5-20mm,Ex/IN,M2,5,L=20mm, Brass	5	20	6	6	M 2,5
SW5-25mm,Ex/IN,M2,5,L=25mm, Brass	5	25	6	6	M 2,5
SW5-30mm,Ex/IN,M2,5,L=30mm, Brass	5	30	6	6	M 2,5
SW5-35mm,Ex/IN,M2,5,L=35mm, Brass	5	35	6	6	M 2,5
SW5-40mm,Ex/IN,M2,5,L=40mm, Brass	5	40	6	6	M 2,5

Material:Brass (CuZn39Pb3)

Surface: nickel-plated

Intermediate lengths and special designs on request

