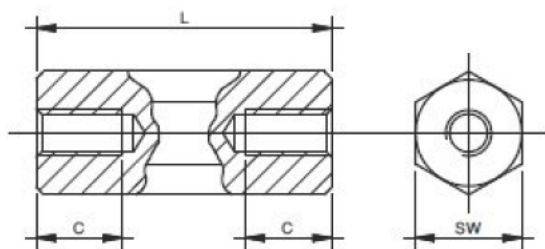


SW4 \* SW5 Thread  
M2 \* M2,5



| Item-Nr.                           | SW | Dimension (mm) |    | Thread |
|------------------------------------|----|----------------|----|--------|
|                                    |    | L              | C  |        |
| SW4-5mm, IN/IN, M2, L=5mm, Brass   | 4  | 5              | 5  | M 2    |
| SW4-6mm, IN/IN, M2, L=6mm, Brass   | 4  | 6              | 6  | M 2    |
| SW4-8mm, IN/IN, M2, L=8mm, Brass   | 4  | 8              | 8  | M 2    |
| SW4-10mm, IN/IN, M2, L=10mm, Brass | 4  | 10             | 10 | M 2    |
| SW4-12mm, IN/IN, M2, L=12mm, Brass | 4  | 12             | 12 | M 2    |
| SW4-15mm, IN/IN, M2, L=15mm, Brass | 4  | 15             | 15 | M 2    |

|                                     |   |    |    |       |
|-------------------------------------|---|----|----|-------|
| SW5-5mm, IN/IN, M2,5 L=5mm, Brass   | 5 | 5  | 5  | M 2,5 |
| SW5-6mm, IN/IN, M2,5 L=6mm, Brass   | 5 | 6  | 6  | M 2,5 |
| SW5-8mm, IN/IN, M2,5 L=8mm, Brass   | 5 | 8  | 8  | M 2,5 |
| SW5-10mm, IN/IN, M2,5 L=10mm, Brass | 5 | 10 | 10 | M 2,5 |
| SW5-12mm, IN/IN, M2,5 L=12mm, Brass | 5 | 12 | 12 | M 2,5 |
| SW5-15mm, IN/IN, M2,5 L=15mm, Brass | 5 | 15 | 15 | M 2,5 |
| SW5-18mm, IN/IN, M2,5 L=18mm, Brass | 5 | 18 | 18 | M 2,5 |
| SW5-20mm, IN/IN, M2,5 L=20mm, Brass | 5 | 20 | 20 | M 2,5 |
| SW5-25mm, IN/IN, M2,5 L=25mm, Brass | 5 | 25 | 5  | M 2,5 |
| SW5-30mm, IN/IN, M2,5 L=30mm, Brass | 5 | 30 | 5  | M 2,5 |
| SW5-35mm, IN/IN, M2,5 L=35mm, Brass | 5 | 35 | 5  | M 2,5 |
| SW5-40mm, IN/IN, M2,5 L=40mm, Brass | 5 | 40 | 5  | M 2,5 |
| SW5-45mm, IN/IN, M2,5 L=45mm, Brass | 5 | 45 | 5  | M 2,5 |

Material: Brass (CuZn39Pb3)

Surface: nickel-plated

Intermediate lengths and special designs on request

