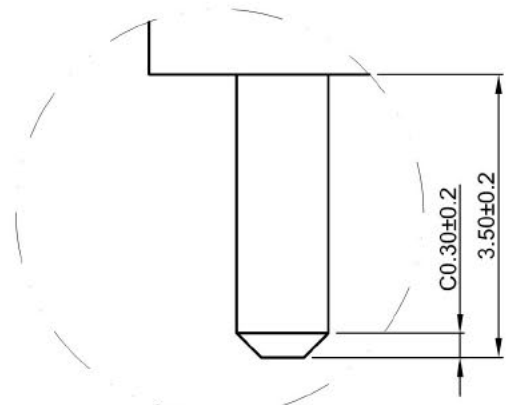
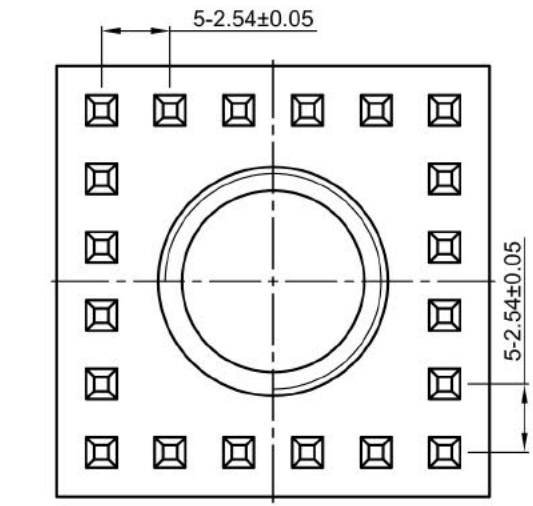
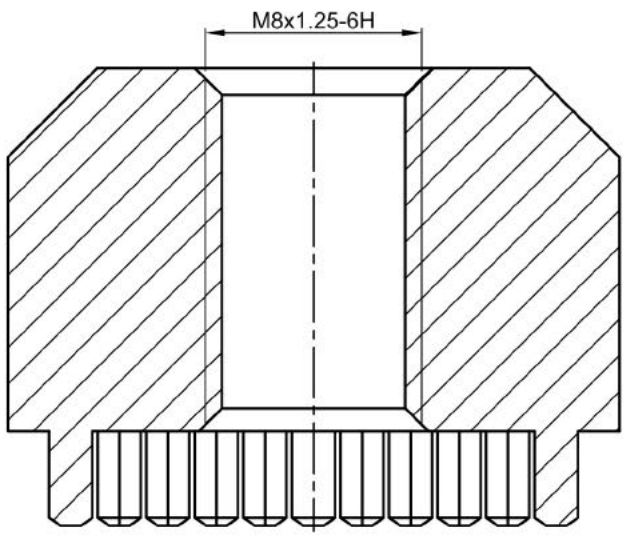
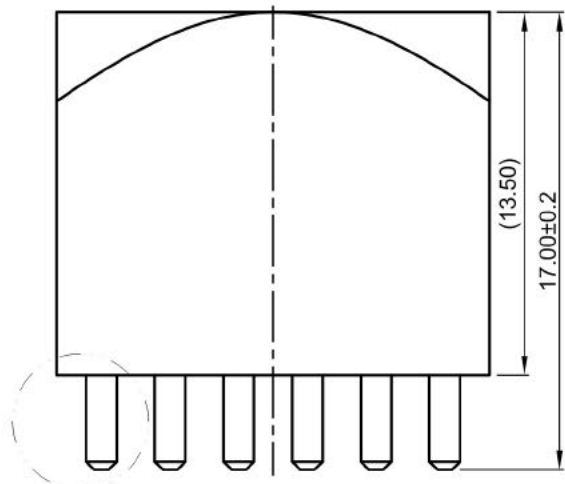
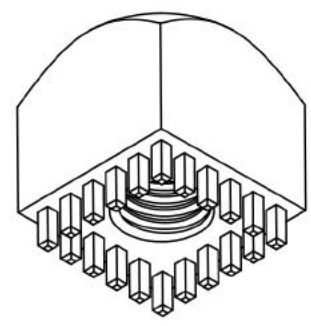
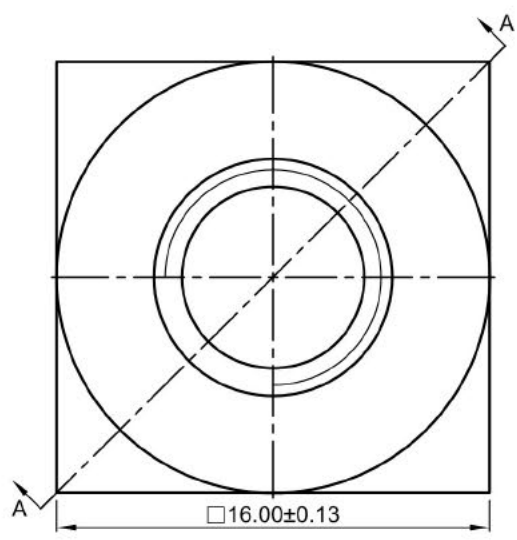


1 2 3 4 5 6

EC No.	EC Description	DR.
△	/	/

1.6



- NOTES:
1. Material: Brass C6801;
 2. Finish: Tin Plated;
 3. Packaging: Blister and Carton;
 4. Free of burrs and sharp edges;
 5. Thread must be checked with Go/No Go Gauge;
 6. Unless otherwise specified: ±0.12mm and angle ±2°.

Patron
Passive Electronic

①	1	/	/	See Note 1	See Note 3	/
Part Item	QTY.	Name	Description	Material	Surface Treatment	Remark
DR.	CHKD.	APPD.	Unit net weight			Rough weight
LEX 2024.02.17			≈ / g			

DIM Tol.:	Angle Tol.:
X. ±	X° ±
.X ±	.X° ±
.XX ±	.XX° ±
.XXX ±	.XXX° ±

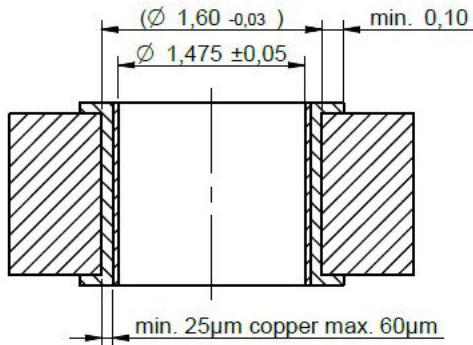
TITLE: PFPE0305B04 PE03-M8x17.0-□16.0ET			
Drawing#:	P/N:	REV.	Sheet
	/	A	1 of 2

1 2 3 4 5 6

EC No.	EC Description	DR.
▲	/	/

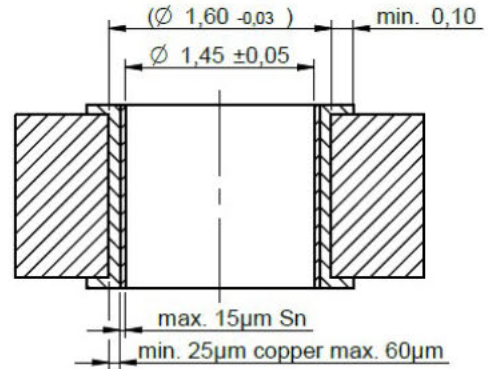
Drillhole specification for PCB:

Drill hole specification for chemical surfaces



Drillhole specification for PCB:

Drill hole specification for HAL



General Information:

Operating Temperature	-55 up to +150 °C
Storage Conditions (for single parts)	0 °C up to + 40 °C; up to 75 % RH
Moisture Sensitivity Level (MSL)	1
Packaging	Bulk

Properties:

Properties	Value	Unit	Tol.
Material	Brass		
Surface	Tin		
Execution	Press-Fit		
Tightening Torque	9	N*m	
Insertion Force	40	N per Pin	min.
Extraction Force ¹⁾	30	N per Pin	min.
PCB Thickness min	1.6	mm	
PCB Thickness max	3.2	mm	
Rated Current	I_R 350	A	

Operating current depends on PCB, cable lug and cross section of the cable

¹⁾ min. 24hours after Press-Fit Process

Patron
Passive Elektronik

①	1	/	/	See Note 1	See Note 3	/
Part Item	QTY.	Name	Description	Material	Surface Treatment	Remark
DR.	LEX 2024.02.17	CHKD.	APPD.	Unit net weight ≈ / g		Rough weight ≈ / g

UNIT: mm

DIM Tol.:	Angle Tol.:
X ±	X° ±
.X ±	.X° ±
.XX ±	.XX° ±
.XXX ±	.XXX° ±

TITLE:
PFPE0305B04 PE03-M8x17.0-□16.0ET

Drawing#:	P/N:	REV.	Sheet
	/	A	2 of 2