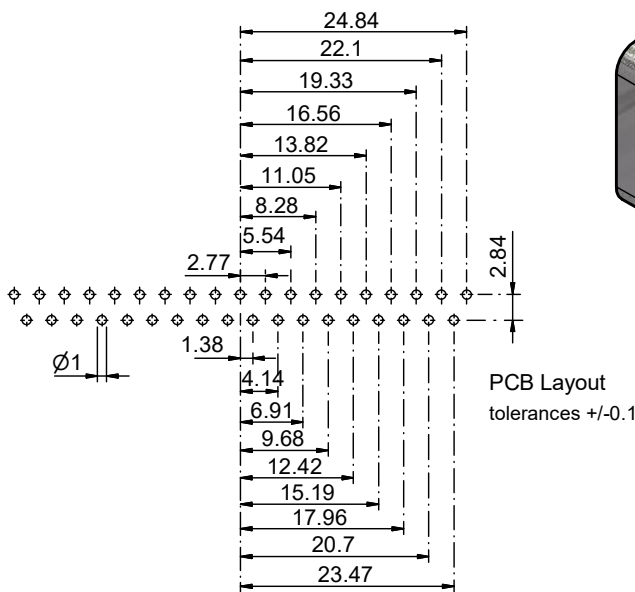
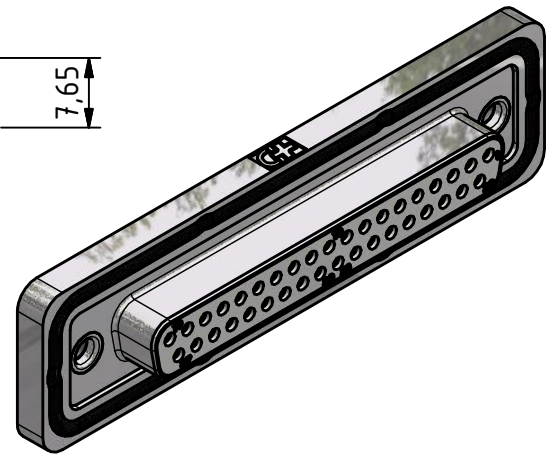
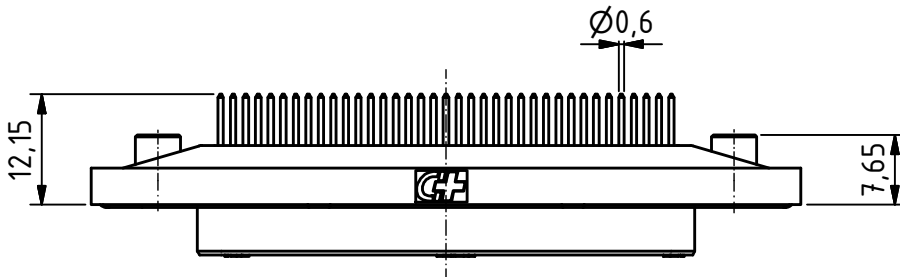
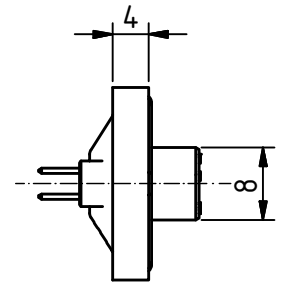
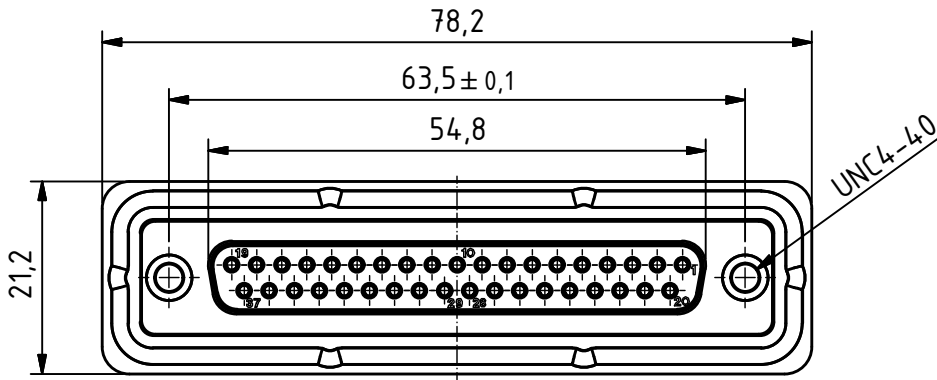


RoHS compliant



Waterproof IP68  
Frame with O-ring sealing for back panel mounting

**MATERIALS**

- Insulator: Thermoplastic UL 94-V-0 white
- Frame: Zinc diecasting nickel plated
- Contact: Machined / Copper alloy
- Contact finish: Quality class 2
- Shell: steel tin plated

**CHARAKTERISTICS**

- Working voltage: 125V
- Current rating: 7.5A
- Contact resistance: max. 10mΩ - DIN41652
- Insulation resistance: >5GΩ
- Temperature range: -55° to +125°C

Product is suitable for Wave Solder Process

| General tolerances (Delttron standard) |      |
|--|------|
| size in mm                             |      |
| > 0.5                                  | ±0.3 |
| up to 3                                | ±0.2 |
| up to 6                                | ±0.2 |
| up to 30                               | ±0.2 |
| up to 120                              | ±0.3 |
| tolerances                             |      |
| ±0.1                                   | ±0.2 |
| ±0.2                                   | ±0.2 |
| ±0.3                                   | ±0.3 |

|                  |                      |      |      |   |          |             |    |
|------------------|----------------------|------|------|---|----------|-------------|----|
|                  | All dimensions in mm | Rev. | Rev. | Rev.  | DE017173 |             |    |
|                  |                      | Rev. | Rev. | Rev.  | part no. |             |    |
| DTSWM37SY/2M85UN |                      |      |      | 1.2:1   | drawn    | 23.02.2016  | mw |
|                  |                      |      |      | scale   | checked  |             |    |
|                  |                      |      |      |   | approved |             |    |
|                  |                      |      |      | Industrie Neuhof 8c<br>CH-3422 Kirchberg<br>www.d-sub.swiss |          | K062426     |    |
|                  |                      |      |      |   |          | drawing no. |    |