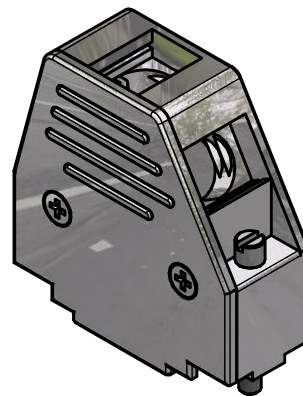
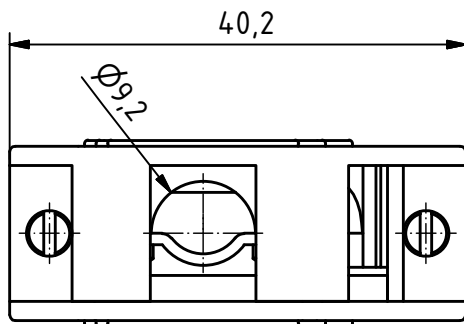
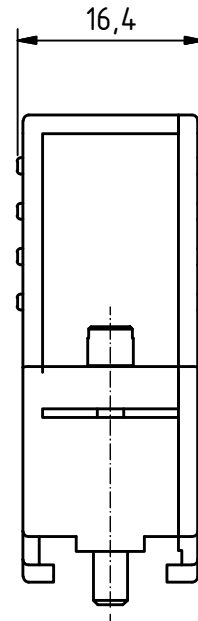
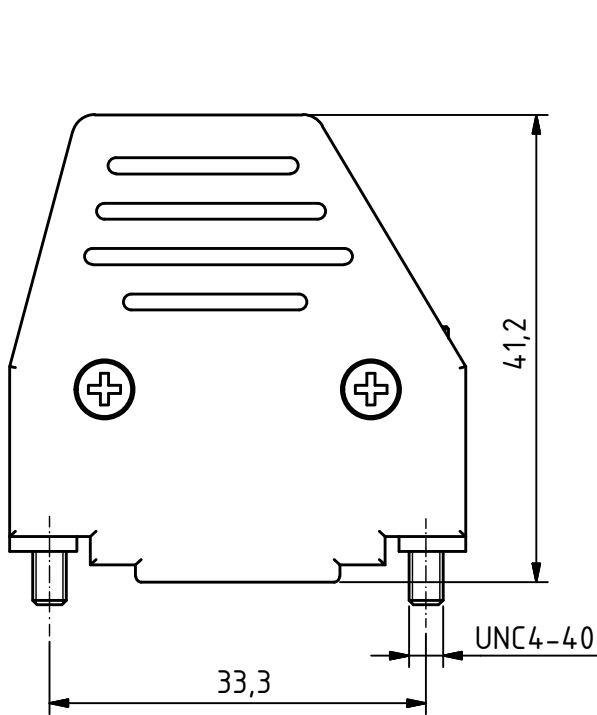


RoHS compliant



**MATERIALS**

- Hood: thermoplastic metallized

**CHARACTERISTICS**

- Temperature range: -40°C to +85°C
- Housing screw: self cutting
- Straight and side cable outlet
- With metal strain relief
- Two mobile assembled screws
- Attenuation: min. 40 db at 100Mhz

-Set packed in bag

General tolerances (Deltron standard)			
size in mm			
> 0.5	> 3	> 6	> 30
up to 3	up to 6	up to 30	up to 120
tolerances			
±0.1	±0.2	±0.2	±0.3

	Rev.	Rev.	Rev.	<b>DE002462</b> part no.		
	Rev.	Rev.	Rev.			
<b>DCM15UN4</b>	1.5:1 scale	drawn	28.02.2011	nf		
		checked				
		approved				
		Industrie Neuhof 8c CH-3422 Kirchberg <a href="http://www.d-sub.swiss">www.d-sub.swiss</a>		<b>K051642</b> drawing no.		