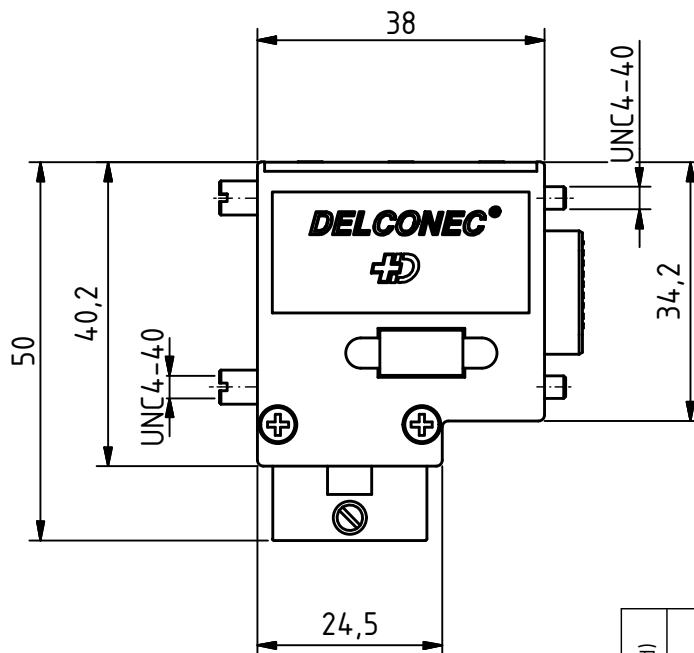
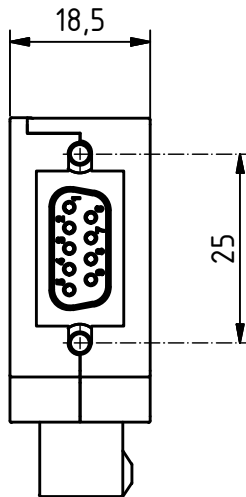
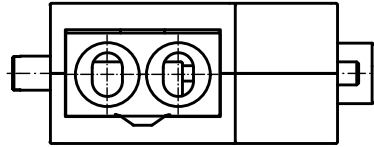
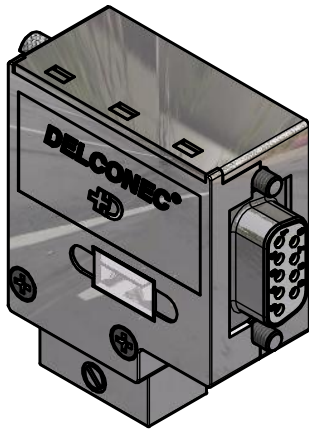


RoHS compliant



**MATERIALS**

- Housing: Plastic metalized

**CHARAKTERISTICS**

- Bus line connection: Terminals, rigid 0.14 to 0.5mm<sup>2</sup>, flexible 0.14 to 0.5mm<sup>2</sup>
- Temperature range: -25°C to +85°C
- Inductor: To reduce the in line reflections
- Connector with switchable resistor network (On/Off)

| General tolerances (Deltron standard) |         |          |           |
|---------------------------------------|---------|----------|-----------|
| size in mm                            |         |          |           |
| > 0.5                                 | > 3     | > 6      | > 30      |
| up to 3                               | up to 6 | up to 30 | up to 120 |
| tolerances                            |         |          |           |
| ±0.1                                  | ±0.2    | ±0.2     | ±0.3      |

|                  |                      |      |      |  |          |             |    |
|------------------|----------------------|------|------|--|----------|-------------|----|
|                  | All dimensions in mm | Rev. | Rev. | Rev.   | DE006603 |             |    |
|                  |                      | Rev. | Rev. | Rev.   | part no. |             |    |
| CB-met. DELCONEC |                      |      |      | 1:1<br>scale   | drawn    | 22.01.2015  | mw |
|                  |                      |      |      |  | checked  |             |    |
|                  |                      |      |      |  | approved |             |    |
|                  |                      |      |      | Industrie Neuhof 8c<br>CH-3422 Kirchberg<br><a href="http://www.d-sub.swiss">www.d-sub.swiss</a> |          | K061868     |    |
|                  |                      |      |      |  |          | drawing no. |    |