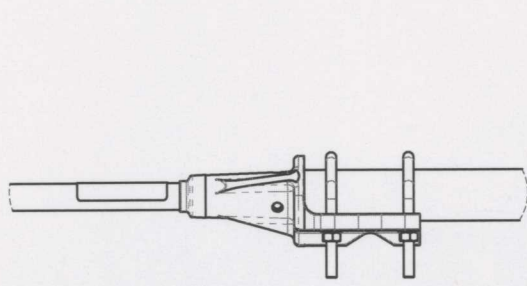
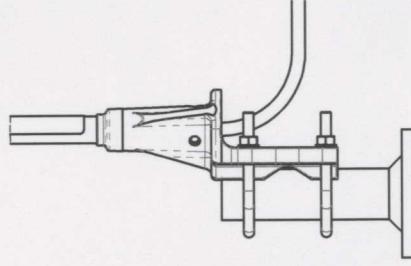


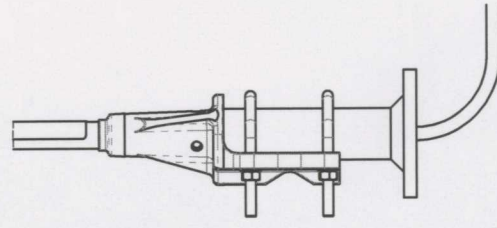
HORIZONTAL MOUNTING TUBE



VERTICAL MOUNTING TUBE
(CONNECTOR PASSES THROUGH
MIDDLE OF TUBE)



DECK MOUNTING
CONNECTOR REMAINING
(WITH
ABOVE DECK)



DECK MOUNTING
CONNECTOR PASSING
TO BELOW DECK)

TYPE No	FREQUENCY MHz	SHROUD LENGTH mm
7500118	118 - 137	1460
7500148	139 - 156	1460
7500001	145 - 165	1330
7500151	153 - 175	1330
7500185	175 - 195	1330
7500200	190 - 200	1330
7500212	200 - 225	1330
7501380	380 - 430	580
7501420	400 - 450	580
7501450	420 - 470	580

HOME OFFICE PART NUMBERS
TYPE 7500 AE 551 P2

ASSEMBLY & MOUNTING INSTRUCTIONS

PLEASE READ THESE INSTRUCTIONS FULLY BEFORE COMMENCING

TOOLS REQUIRED: 13mm A/F SPANNER

MOUNTING

SECURELY FIX MAST CLAMP TO VERTICAL OR HORIZONTAL MOUNTING RAIL AS REQUIRED. TIGHTEN FIXINGS TO REQUIRED TORQUE (M8=20Nm) ENSURE ADEQUATE LIGHTNING PROTECTION ENVELOPE IS PROVIDED BY INSTALLATION

ANTENNAS FITTED WITH DOWNLEADS LONGER THAN 2 METRES TO BE SUPPORTED DURING INSTALLATION

CONNECTION

ENSURE CONNECTOR IS CLEAN AND DRY. MATE WITH FEEDER CABLE CONNECTOR. COVER WITH PLASTIC SLEEVE AND SEAL IN CUSTOMER APPROVED MANNER ENSURE CABLE ROUTING IS NOT STRESSED CABLE MINIMUM BEND RADIUS = 51.5mm

MAINTENANCE

ANNUAL VSWR AND VISUAL INSPECTION FOR LOOSE OR MISSING PARTS SHOULD ENSURE STATED PERFORMANCE IS MAINTAINED

