

# Product Data Sheet

DIN 41612 Female straight, type E,  
Part No. 108-40064

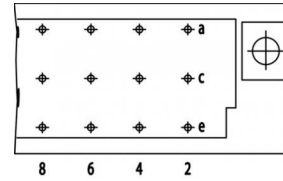
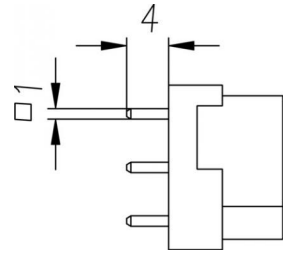
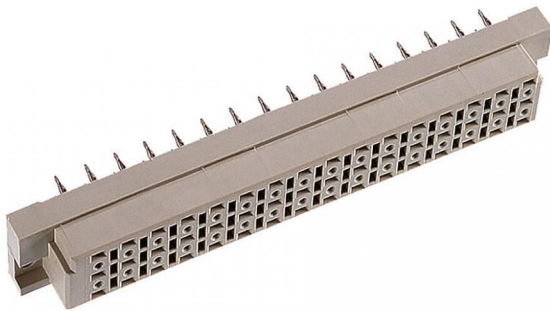


Illustration similar



Parallel



Perpendicular



Through Hole



Power



Rugged

- Termination length 4 mm
- termination 1 x 1
- 48 contacts
- solder
- performance level 2



» to product on [www.ept.de](http://www.ept.de)



» to product group DIN 41612

# Product Data Sheet

DIN 41612 Female straight, type E,  
Part No. 108-40064



## Technical Specifications

### Basics

|                             |                         |
|-----------------------------|-------------------------|
| Specification               | IEC 60603-2 (DIN 41612) |
| Performance Level           | 2                       |
| No. of Contacts             | 48                      |
| Termination Technology      | solder                  |
| Termination Length          | 4 mm                    |
| Board-to-Board Distance     | 17.85 mm                |
| Operating Temperature Range | -55°C to +125°C         |

### Material

|                    |                            |
|--------------------|----------------------------|
| Insulator Material | PBT glass filled UL 94 V-0 |
| Contact Material   | Copper alloy               |

### Mechanical

|                          |                   |
|--------------------------|-------------------|
| Pitch                    | 5.08 mm           |
| Mating Force             | < 60 N            |
| Separating Force per Pin | > 0.15 N          |
| Durability               | 400 mating cycles |

### Electrical

|                        |                      |
|------------------------|----------------------|
| Operational Current    | 5.6 A                |
| Contact Resistance     | < 15 mΩ              |
| Clearance and Creepage | ≥ 3.0 mm             |
| Insulation Resistance  | > 10 <sup>6</sup> MΩ |
| Test Voltage           | 1500 V               |

### Processing

|                       |          |
|-----------------------|----------|
| Soldering Temperature | to 260°C |
|-----------------------|----------|

### Approval / Compliance

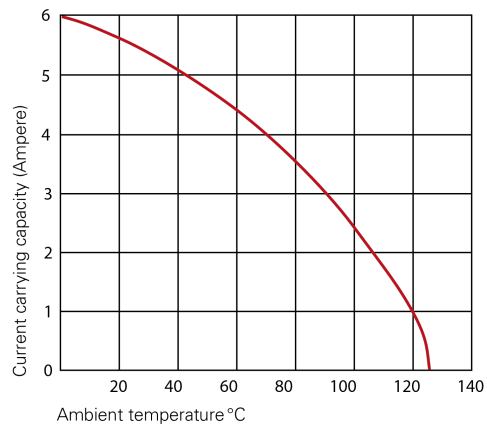
|             |                |
|-------------|----------------|
| UL file     | E130314        |
| Environment | RoHS compliant |

# Product Data Sheet

DIN 41612 Female straight, type E,  
Part No. 108-40064



## Derating Diagram



### Type D, E, F, G

|        |       |
|--------|-------|
| 20 °C  | 5.6 A |
| 70 °C  | 4.0 A |
| 100 °C | 2.5 A |

# Product Data Sheet

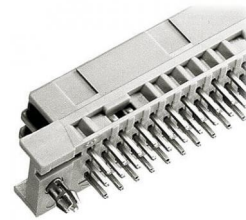
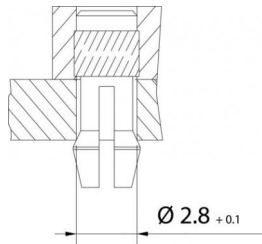
DIN 41612 Female straight, type E,  
Part No. 108-40064



## Options

### Board Lock

Suitable for connectors with type B, C, D, E, F low profile, G low profile, M female connectors and R male connectors



|                   | Forces |                    |                | Part Number | PCB Thickness |
|-------------------|--------|--------------------|----------------|-------------|---------------|
|                   | $F_m$  | not soldered $F_h$ | soldered $F_h$ |             |               |
| Type of Insertion | $F_m$  | not soldered $F_h$ | soldered $F_h$ | 108-40064C1 | 1.6 mm        |
| Locked            | < 20 N | > 10 N             | > 25 N         | 108-40064C2 | 2.4 mm        |
| Under Tension     | < 20 N | > 5 N              | > 25 N         | 108-40064C3 | 3.6 mm        |

## Modifications

Available on request

- Without flange
- Special contact length
- Performance levels I + III or customer-specific
- Contact arrangement

## Accessories

» DIN 41612 Coding type D, E, F and G  
Part Number 106-10001

## Drawings

Component data in 2D and 3D format you can download here:

# Product Data Sheet

## Drawings

Component data in 2D and 3D format you can download here:

» [PDF](#)